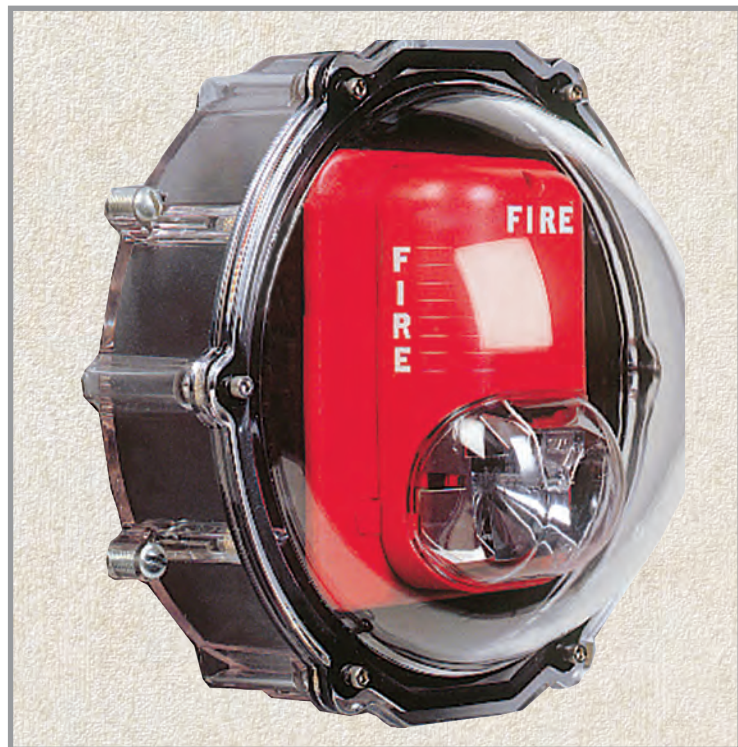


# STI Stopper Dome®



STI-1229

## PRODUCT OVERVIEW

This super tough cover is designed to provide maximum protection against physical damage (both accidental and intentional), dust, grime and damage from severe environments indoors and out. The STI-1229 is for smaller strobe units of the new generation of fire signal appliances. It is a weatherproof cover for surface mounted applications which can be used in wet or hose down areas (such as kitchens, cafeterias, meat packaging plants, showers, outdoors, etc.).

## HOW IT WORKS

Both the cover and circular back box are moulded from clear, thick polycarbonate material that is UV-stabilized against discolouration. The STI-1229 incorporates an appliance mounting plate that eliminates the need for an electrical outlet box, as well as a special gasket for NEMA 4X applications. In extremely frigid conditions, use the STI-1229HTR Heated Enclosure. Also available is a similar cover with slots (STI-1219) for surface mounted applications of horn signal units. The STI-1219 is not NEMA 4X Rated.

## KEY FEATURES

### General Information

- This super tough cover is designed to provide maximum protection against physical damage both accidental and intentional.
- Three year guarantee against breakage of polycarbonate in normal use.

### Design

- Protects sounder and strobe units from vandalism and accidental damage.

### Construction

- Tough polycarbonate housing can withstand the severest of knocks.

### Installation

- Retrofits over the device to be protected.
- Comes complete with mounting hardware.
- Polycarbonate tested -40°C (-40°F) to 49°C (120°F).

### Options

- Open back with conduit knockouts and the slots allow the sounder to be heard.
- Easy access for servicing protected device.
- Optional depth spacers and back boxes for weather proofing are also available within this model range.



For more information, call +44 (0)1527 520 999 or visit [www.sti-emea.com](http://www.sti-emea.com)

# STI Stopper Dome®

Dimensions and Technical Information

## MODELS AVAILABLE

<b>STI-1215</b>	Stopper Dome for horn/speaker/strobe for flush mount
<b>STI-1217</b>	Stopper Dome for horn/speaker/strobe with open back box
<b>STI-1219</b>	Stopper Dome for horn/speaker/strobe with enclosed back box
<b>STI-1225</b>	Stopper Dome for strobe only - flush mount
<b>STI-1227</b>	Stopper Dome for strobe only with open back box
<b>STI-1229*</b>	Stopper Dome for strobe only with enclosed back box, NEMA 4X
<b>STI-1229-HAZ*</b>	Stopper Dome for strobe only with enclosed backbox, Type 4X hazardous locations
<b>STI-1212</b>	Spacer kit
<b>KIT-84</b>	Tamper resistant screws
<b>KIT-123</b>	Enviro Kit includes 3 gaskets
<b>19038</b>	Bit for tamper resistant screws

(\*Hazardous models available)

## PERFORMANCE REVIEW

### MANUFACTURER

SYSTEM SENSOR (P2, PC2, P4, PC4, SX, SC)  
 WHEELOCK (RSS 24MCW)  
 ADT SECURITY (ADTG1-V Series), EST/EDWARDS (G1-V, G1-HV Series, G1-HOV Series, EG1-V, EG1-HV Series, EG1-HOV Series), HONEYWELL (XLSG1-V, XLSG1-HV Series, XLSG1-HOV Series), MIRCOM (MG1-V, MG1-HV Series, MG1-HOV Series), MIRTONE (MG1-V Series), SIEMENS (G1-V Series), ZITON PTY LTD (ZG1-V Series)  
 FARADAY LLC (2700), SIEMENS (U-MCS Series)  
 EST/EDWARDS (2440S, 202 Series), HONEYWELL (XLS202 Series), MIRCOM (MS Series), SIEMENS (202 Series)  
 WHEELOCK (RSS-24MCC)  
 SYSTEM SENSOR (SS24110ADA)  
 AMSECO (SL24W-153075), AMSECO - Coloured Lenses (SL24W-153075 A, B, G or R, SL24C-3075110 A, B, G or R, CSL24W-A, B, G or R, CSL24C-A, B, G or R),  
 DETECTION SYSTEMS (GES24 Series, GES24-15/75), GENTEX (GES24 Series, GES24-15/75), HARRINGTON SIGNAL (GES24 Series, GES24-15/75), HONEYWELL (XLSG1-HOV Series), MIRCOM (FS-240), NATIONAL TIME & SIGNAL (GES24 Series, GES24-15/75), POTTER ELECTRIC (AS-24-153075R, AS-24-153075W), SECUTRON (GES24 Series, GES24-15/75)

### LIGHT LOSS %

28%  
31%

32%  
33%  
34%  
35%  
36%

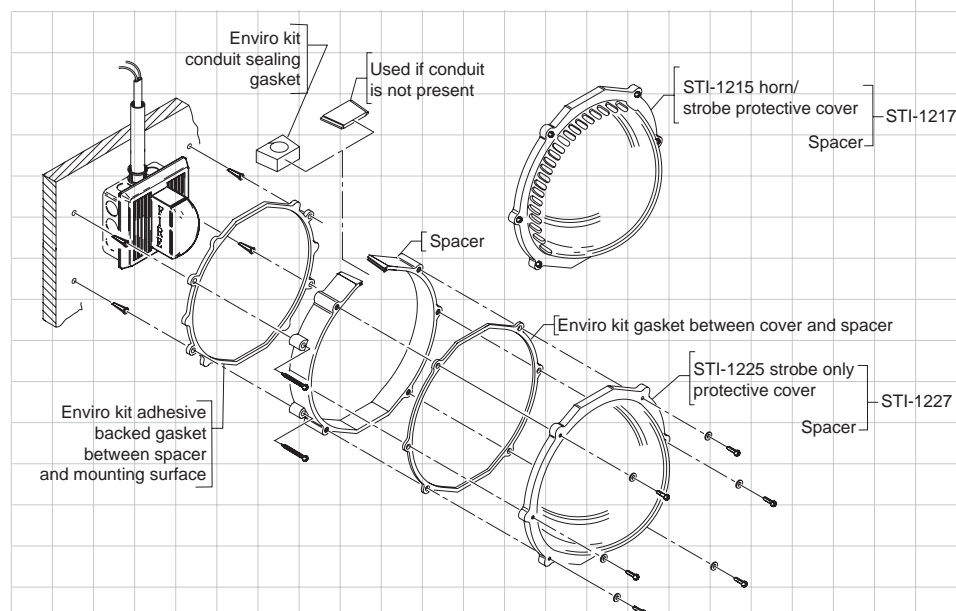
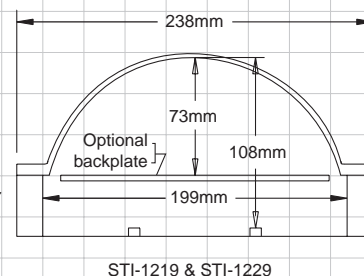
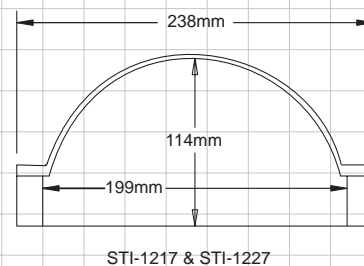
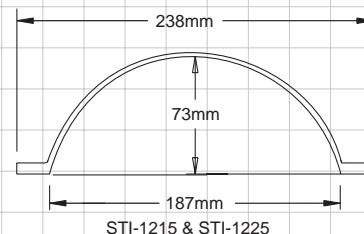
37%

## APPROVALS

### TESTING

It has been tested and approved or listed by:

- UL and cUL, NEMA 4X, and UL 50 File S7025
- UL and cUL Hazardous File E228169
- For hazardous applications in Canada, to meet cUL, your strobe must be ULC Listed. UL and cUL, NEMA 4X, and UL 50 File S7025



**Safety Technology International**

### UK Office

Taylor House  
 34 Sherwood Road  
 Bromsgrove  
 Worcestershire  
 B60 3DR, England

Tel: +44 (0)1527 520 999  
 Fax: +44 (0)1527 501 999  
 info@sti-emea.com  
 www.sti-emea.com

### USA Head Office

2306 Airport Road  
 Waterford, Michigan  
 48327 - 1209

Tel: +248-673-9898  
 Fax: +248-673-1246  
 Toll-free: 0800-888-4STI  
 info@sti-usa.com  
 www.sti-usa.com