

# MTT

## SENSITIVE PUSH BUTTON

MTT is a request-to-exit switch. It can work independently (standalone), or be connected via a controller to provide exit from a secured area (Push Button Input). With its slim look and moulded aluminium body, the MTT combines elegance and aesthetics with ruggedness and reliability. The housing is available in black ABS too.

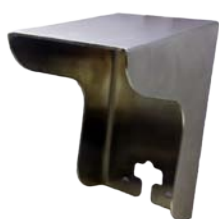
### FEATURES

- Feather light touch control
- Works in Pulse and Latch mode
- Ideal for a wide range of applications
- Vandal-resistant
- Resin Potted Electronics
- Front dual light indication
- Configurable internal or external light indication control
- Buzzer sound on every touch
- Built in tamper

### APPLICATIONS

Light switch  
Exit button (Access control)  
Elevator button  
Industrial panel

### ACCESORIES



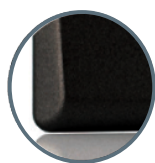
**MC MINI**  
Protection cover in A304  
brushed steel for single  
Mini range reader.

### VERSIONS



MTTS

Silver - Metal



MTTBK

Black - ABS



MTTS ARROW



MTTS EXIT

**bx** Black Edition

Products available in Black ABS

### SPECIFICATIONS

Power supply:	12-24V DC; 15-24V AC;
Current consumption:	max.65mA
Relay Output:	2A at 24 DC / 120V AC
Inputs:	2 inputs for external control of the light.
Indicators-LED:	Red and Green, behavior configurable by DIP switch
Operating Temperature:	-20° to 50°C
Operating Humidity:	0-95% non-condensing
Housing:	Moulded Aluminium alloy housing Available in Black ABS
Touch Plate:	Stainless steel
Protection:	IP65

### DIMENSIONS

