



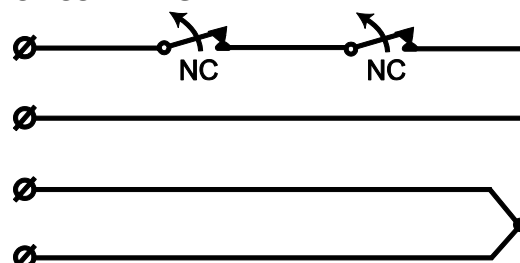
## DESCRIPTION

MC 370-S12 is a versatile high security magnetic contact used in both alarm and security access control systems for protection of doors, gates and windows against unauthorized opening. A range of accessories makes the contact suitable for a variety of applications.

## MOUNTING INSTRUCTIONS

- Contact and magnet should be installed axially, corresponding to each other.
- Contact and magnet parts need to be screwed to surface by two non-ferromagnetic screws [each part].

## CIRCUIT DIAGRAM



## OPERATING PRINCIPLE

MC 370-S12 magnetic contact has two parts: the contact part with alarm and sabotage reed switches and the magnet part. In its neutral position the alarm reed switch remains closed under the force of the magnetic field. Opening the monitored object increases the distance between the reed switch and the magnet. This reduces the influence of the magnetic field on the reed switch until it opens and activates an alarm.

MC 370-S12 has an extra sabotage reed switch to protect the contact from sabotage with an external magnet. When an external magnet is applied to the contact, the sabotage reed switch opens and activates an alarm. The sabotage switch can be also opened by the corresponding (friendly) magnet. The distance between the contact and the corresponding magnet, at which the sabotage reed switch opens is called sabotage distance.

**Magnetic contacts should not be installed in the vicinity of strong magnetic fields.**

## TECHNICAL DATA

Working environment	Wood	Steel
Sabotage distance	<b>max. 9 mm</b>	<b>max. 10 mm</b>
Make distance	<b>typ. 30 mm</b>	<b>typ. 24 mm</b>
Break distance	<b>typ. 35 mm</b>	<b>typ. 30 mm</b>
Contact type	form A (SPST)	
Switching voltage max.	48 V DC/AC	
Switching current max.	500 mA DC/peak AC	
Contact rating max.	10 W	
Cable	φ 3,4 mm, 4x0,182 mm <sup>2</sup>	
Operating temperature range	-40°C to +70°C	
Operating humidity range	max. 95% r. h.	
Housing material	plastic ABS	
Dimensions:		
Contact part	35 x 22 x 12 mm	
Magnet part	35 x 22 x 12 mm	

## INSTALLATION

Contact and magnet must be aligned axially in the frames and leaves of the monitored objects (windows, doors etc.). Offset will reduce the working distances and may result in faulty operation or lower security. The contact should be mounted in the stationary part of the monitored object (ex. door frame) and the magnet in the movable part (ex. door leaf). Before mounting, holes must be drilled. Non-ferromagnetic screws need to be used for installation.

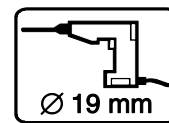
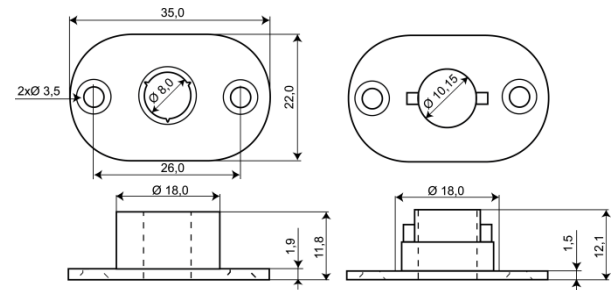
**Twisting the contact housing counterclockwise 2-3 times before mounting will protect the cable from mechanical stress.**

After the installation, use an ohmmeter to check the electrical connections and test the function of the magnetic contact.

**Warning: applying excessive force to the housing of the contact may damage the glass body of the reed switches inside.**

## HOUSING DIMENSIONS FOR INSTALLATION:

### MC 300-S12 PAIR OF FLANGES



## RESISTORS (OPTIONAL)

MC 370-S12 is available in two additional options with resistors of the chosen value: MC 370-S12-R with one resistor parallel to the alarm switch and MC 370-S12-2R with two resistors in 2EOL configuration.

We reserve the right to changes without notice.