



Dahua Driver Installation and Operation Guide

For Paxton Net2 Platform

Revision

Revision History	Release note	Revisor	Date
Version 1.0	First Edition	Scott Ruan	14/04/2016
Version 1.1	Add contact info for global customer	Scott Ruan	28/04/2016

1. Overview

This guide aims to help users to install Dahua drivers and get the video footage correctly from Dahua recorders on Paxton Net2 Platform.

➤ Requirement

Dahua driver - DahuaMiniDriverSetup.msi

Paxton Net2 version 5.03.4008.6211 or above

➤ Dahua Contact Information

Email: overseas@dahuatech.com

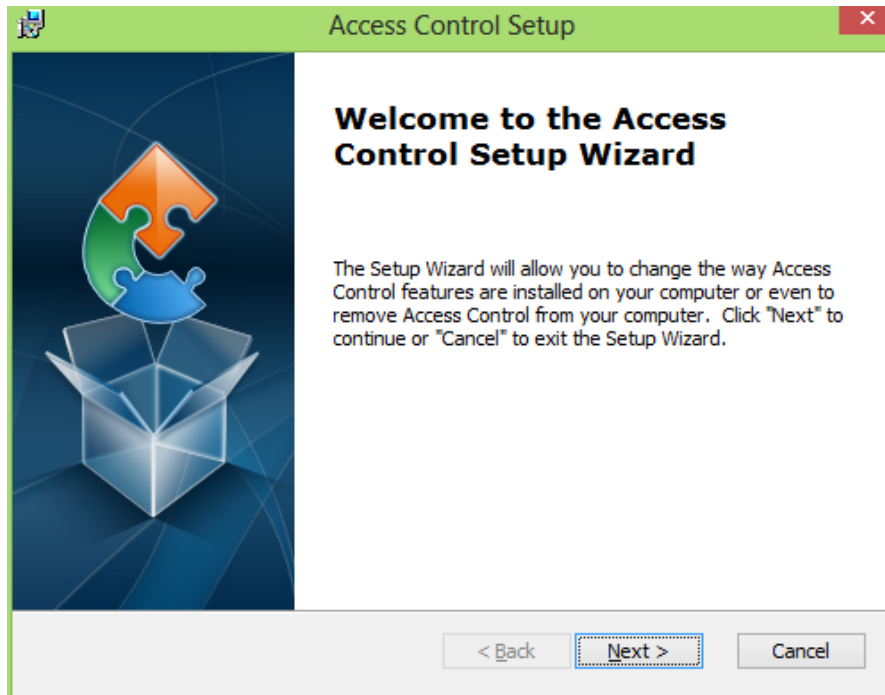
Tel: +86 571 8768 8883

Website: <http://www.dahuasecurity.com/>

2. Installation

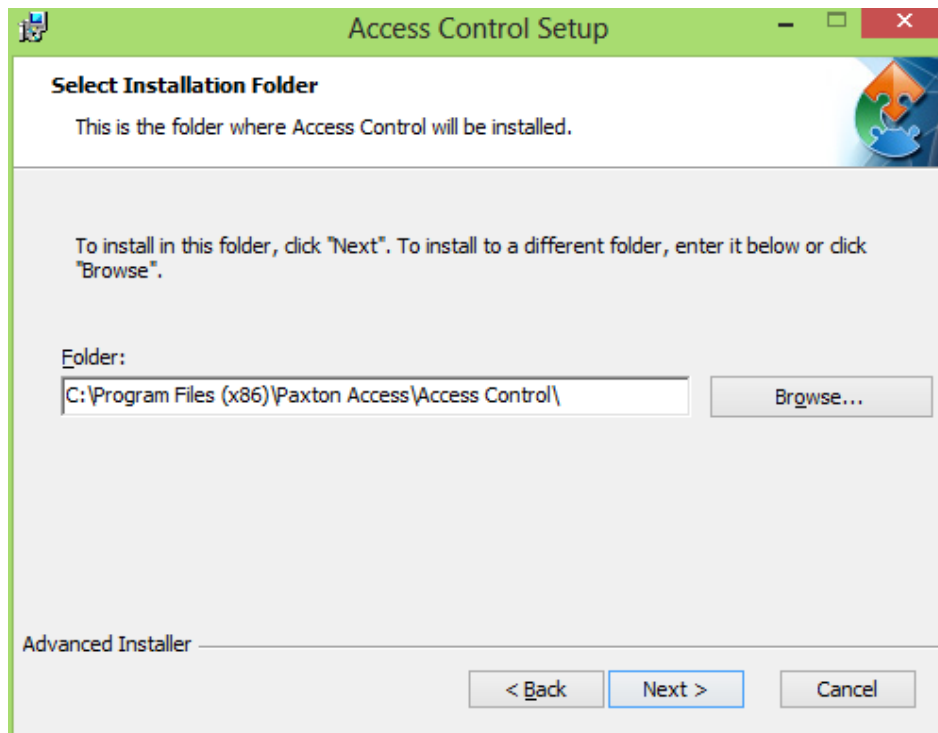
2.1 Driver Installation

a) Double click DahuaMiniDriverSetup.msi, click the next

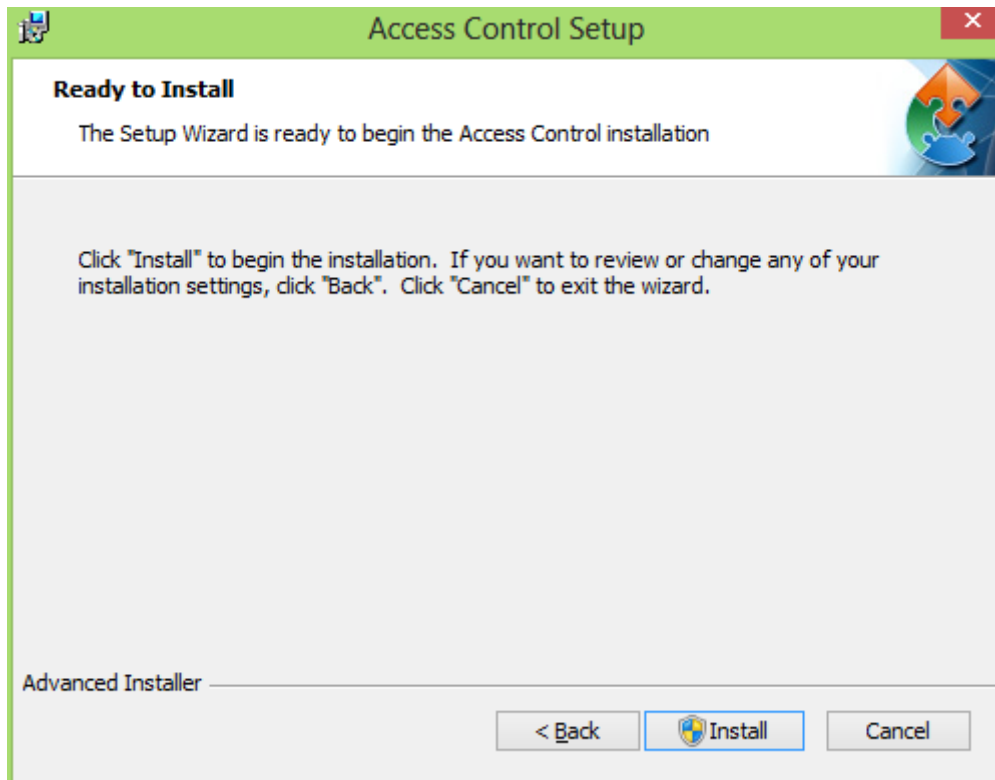


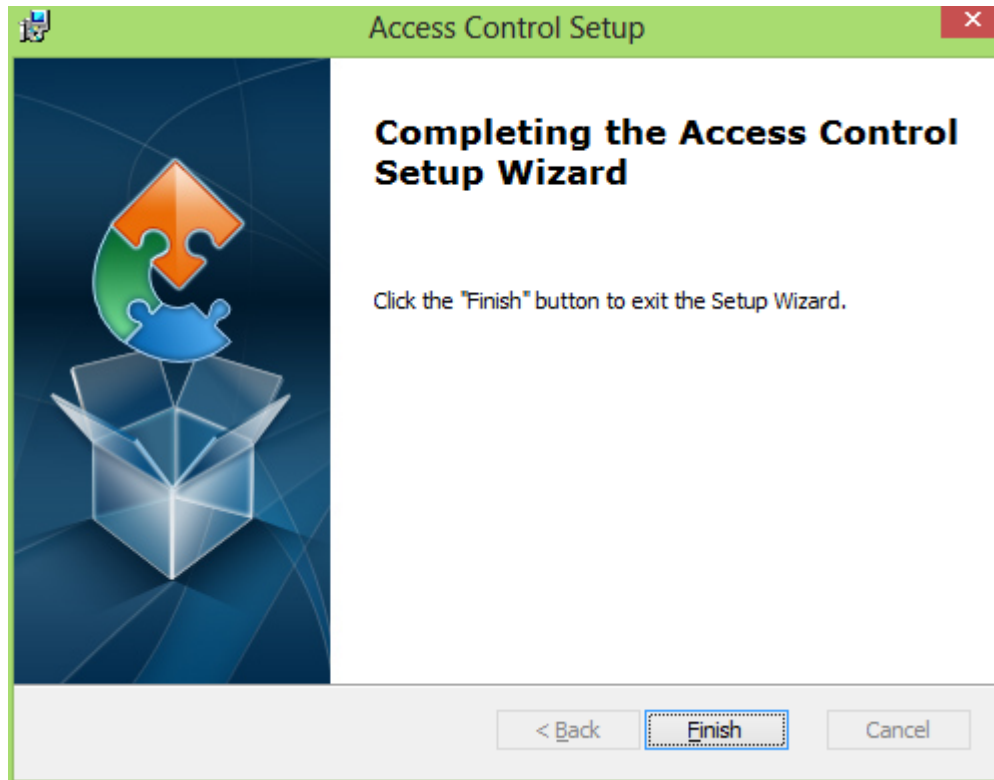
b) Please install the driver as the path below and click next

Note: Please make sure the path is correct, it should be the same folder with Net2.exe



- c) Click install to start the installation, and click finish afterwards to exit the installation.

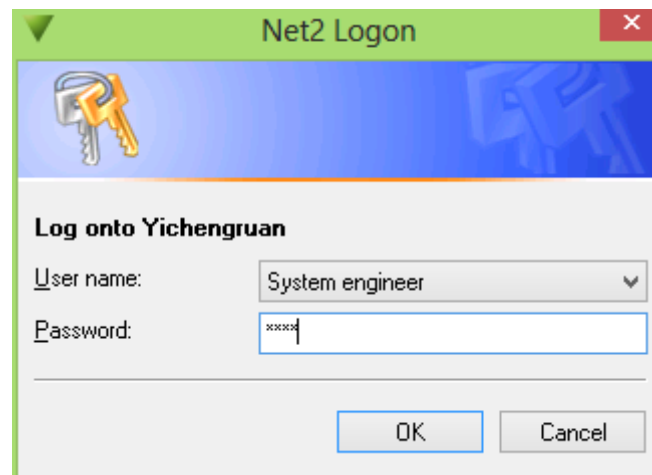




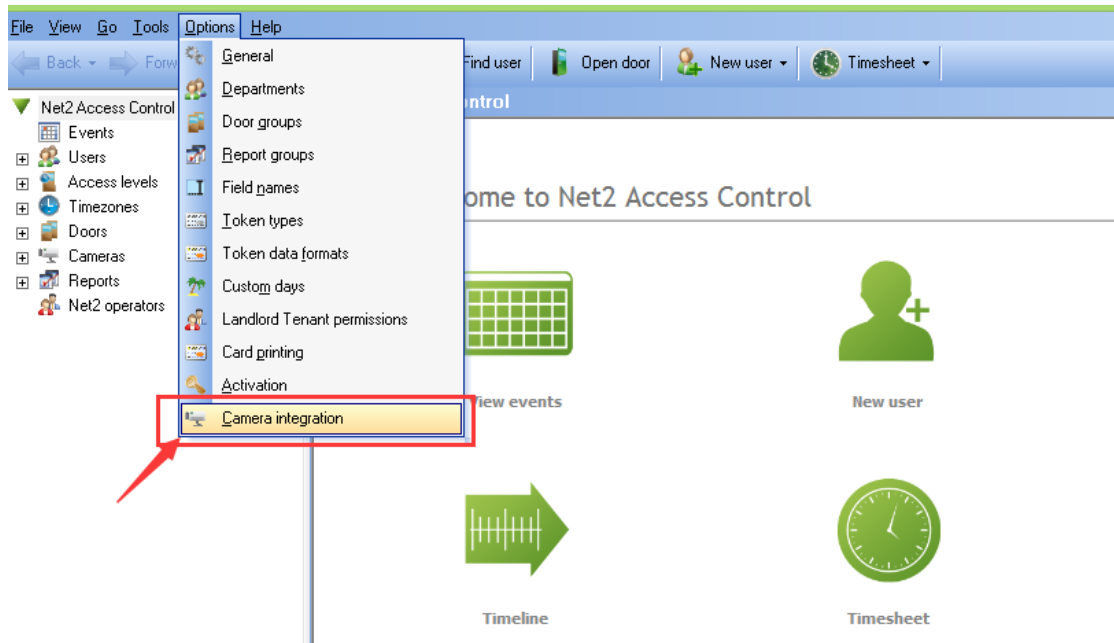
3. Operation

3.1 Set up the camera on Net2

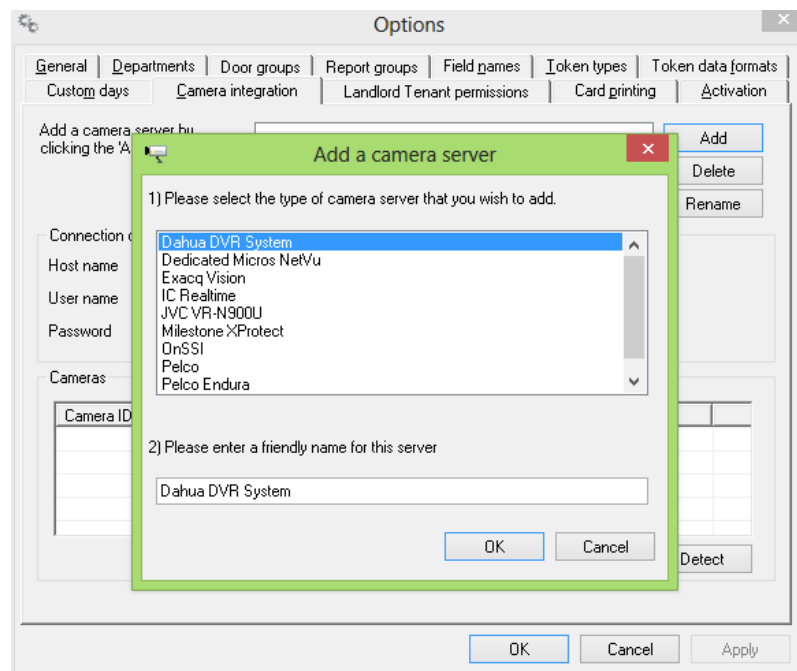
a) Login Net2



b) Go to Options -> Camera integration as below



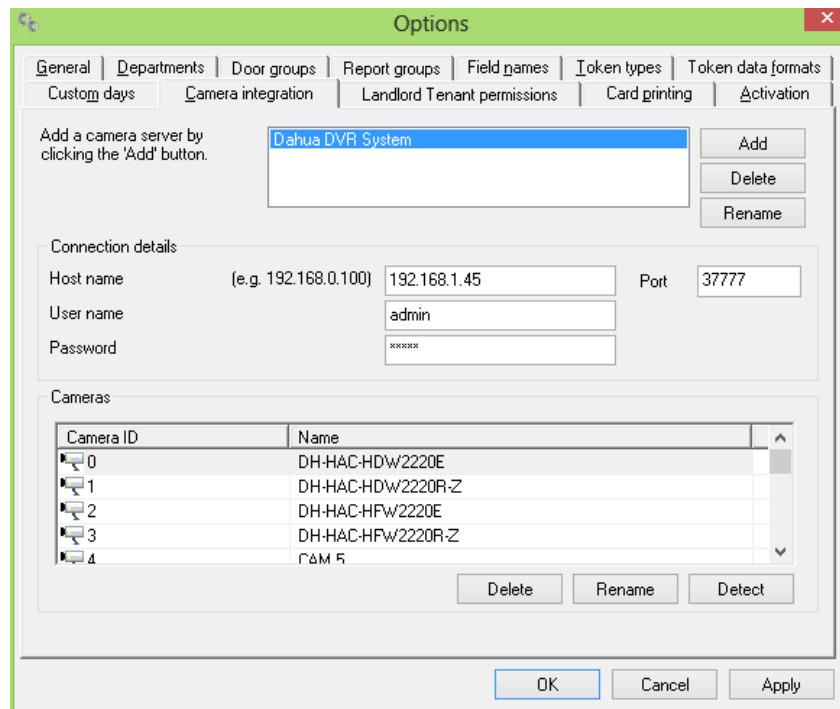
c) Click add and choose Dahua DVR system, then click OK



d) Enter the IP address and TCP port, username and password. Click Detect, the camera list will show up in that window

Note: The camera names can be renamed as per your demand. However,

please notice this only changes the camera name in Paxton, it won't change the names at the recorder end.



Options

General | Departments | Door groups | Report groups | Field names | Token types | Token data formats | Custom days | Camera integration | Landlord Tenant permissions | Card printing | Activation

Add a camera server by clicking the 'Add' button.

Dahua DVR System

Add Delete Rename

Connection details

Host name (e.g. 192.168.0.100) 192.168.1.45 Port 37777

User name admin

Password xxxxxx

Cameras

Camera ID	Name
0	DH-HAC-HDW2220E
1	DH-HAC-HDW2220R-Z
2	DH-HAC-HFW2220E
3	DH-HAC-HFW2220R-Z
4	CAM 5

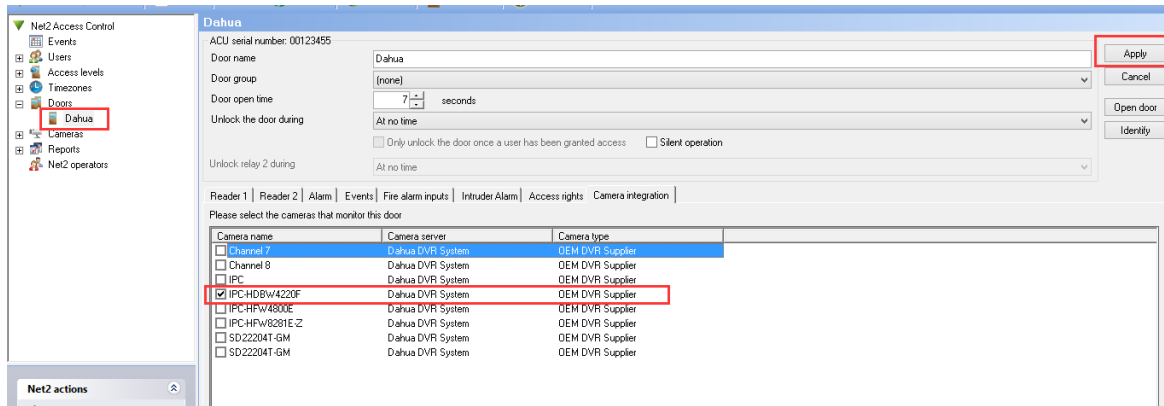
Delete Rename Detect

OK Cancel Apply

3.2 Camera integration with the door

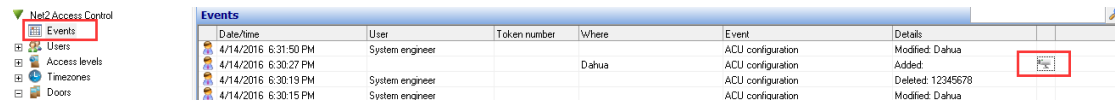
Choose the door in the list at left, go to 'camera integration' tab. Tick the camera that you want to monitor, and click apply.


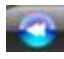
Note: Only one camera per door is supported at this version.



3.3 View the footage

a) Click Event, double click the camera icon to view the playback footage.



b) Click  to fast forward, then click  to slow down.

Note: The video will start 10 sec ahead of the event time to allow the user to see what happens leading up to the event. Rewind facility is not supported at the first edition.

