

iCLASS Key - 205

The iCLASS Key can be ordered either with both SIO and iCLASS programming or iCLASS programming only. Attach to a key ring or badge clip for convenient use.

Ensure each required option has been checked with the appropriate choice to fulfill a completed order form.

Base Model ☒ 205 Base Model

iCLASS Memory Size and Allocation (Select one option)

- ☒ 0 - 2k Bits (256 Bytes) with 2 Application Areas
☐ 3 - 32k Bits (4K Bytes) Application areas 16k/2+16k/1
☐ 4 - 32k Bits (4K Bytes) Application areas 16k/16+16k/1

Programming (Select one option)

- ☐ H - Programmed with Security Identity Object (SIO) and iCLASS encoding (Recommended). Specify programming information.
☒ P - Programmed iCLASS only. Specify programming information
☐ C - iCLASS Unprogrammed, for use with iCLASS SE Encoder.
 Programming Information Not Required

Front Packaging

- ☒ N - iCLASS Key II - Black with blue insert. Includes HID Standard Artwork

Back Packaging

- ☒ N - None

Key Numbering¹ (Select one option)

- ☒ M - Sequential Matching Encoded/Printed (Inkjetted)⁴
☐ N - No Printed Key Numbering
☐ S - Sequential Encoded/Sequential Non-Matching Printed (Inkjetted)⁴
☐ R - Random Encoded/Non-Matching Sequential Printed (Inkjetted)⁴
☐ A - Sequential Matching Encoded/Printed (Engraved)²
☐ B - Sequential Encoded/Sequential Non-Matching Printed (Engraved)²
☐ C - Random Encoded/Non-Matching Sequential Printed (Engraved)²

Additional Options³

- ☒ N - None

Enter your final card options from the above selections. Example: 2050HNNMN

Final Part Number	205	0	P	N	N	M	N
-------------------	-----	---	---	---	---	---	---

iCLASS Key Programming Information

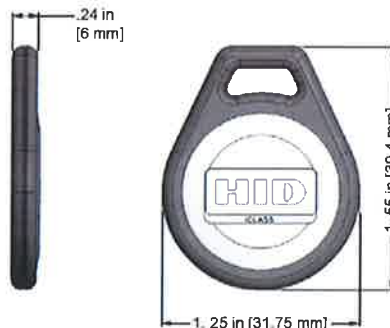
Format Number H10301 (example: H10301) Bit Numbers 26 (example: 26 bit) Facility Code 255
 Encoded Card # Start _____ Stop _____ Printed Card # Start _____ Stop _____
 HID Elite ICE Number (if applicable) - _____ (Custom Format) Site Code _____ City Code _____ OEM Code _____
 PIN (2-12 digits) : ☐ Sequential: Start # _____ ☐ Random: Length _____
 Special Instructions: _____

¹ The Printed key number is placed on the back of the key.

² For Laser Engraved Printed numbers, consult factory for lead times and cost.

³ Key Ring sold separately (Part Number: 57-0001-02).

⁴ Please note that cards shipped within North America are always laser-engraved. Inkjetted option is not available for these cards.



12/12/2016