



iCLASS SE Credentials

iCLASS SE Card - 300 / 305

Added security into installations that do not contain standard iCLASS readers, these cards are not available with iCLASS programming. Ensure each required option has been checked with the appropriate choice to fulfill a completed order form.

Base Model ☐ 300 Standard PVC ☐ 305 Composite 40% Polyester / PVC*

iCLASS Memory Size and Allocation (Select one option)

- ☐ 0 - 2k Bits (256 Bytes) with 2 Application Areas
- ☐ 3 - 32k Bits (4K Bytes) Application areas 16k/2+16k/1
- ☐ 4 - 32k Bits (4K Bytes) Application areas 16k/16+16k/1

Secure Identity Object Programming

- ☐ P - Programmed with Security Identity Object (SIO)
- ☐ V - Unprogrammed, for use with iCLASS SE Encoder

Front Packaging (Select one option)

- ☐ G - Plain White with Gloss Finish
- ☐ C - Custom Artwork with Gloss Finish - Specify Custom Artwork Number¹

Back Packaging (Select one option)

- ☐ G - Plain White with Gloss Finish²
- ☐ C - Custom Artwork with Gloss Finish - Specify Custom Artwork Number¹
- ☐ 1 - Plain White with Gloss Finish with Magnetic Stripe²
- ☐ 3 - Custom Artwork with Gloss Finish with Magnetic Stripe - Specify Custom Artwork Number¹

Card Numbering³ (Select one option)

- ☐ M - Sequential Matching Encoded/Printed (Inkjetted)⁷
- ☐ N - No Printed Card Numbering
- ☐ S - Sequential Encoded/Sequential Non-Matching Printed (Inkjetted)⁷
- ☐ R - Random Encoded/Non-Matching Sequential Printed (Inkjetted)⁷
- ☐ A - Sequential Matching Encoded/Printed (Laser Engraved)⁴
- ☐ B - Sequential Encoded/Sequential Non-Matching Printed (Laser Engraved)⁴
- ☐ C - Random Encoded/Non-Matching Sequential Printed (Laser Engraved)⁴

Slot Punch⁵ (Select one option)

- ☐ N - No slot punch, Printed Vertical Slot Indicators
- ☐ B - No Slot Punch. This card can be slotted horizontally, Printed Horizontal Slot Indicators.⁶
- ☐ V - Vertical Slot Punch
- ☐ H - Horizontal Slot Punch ⁶

Option - Custom Artwork¹

- ☐ _____ (Specify Artwork Number - Refer to the Custom Artwork Forms for new artwork)

Enter your final card options from check boxes above. Example: 3000PGGNN

Final Part Number									-	(Options #)
-------------------	--	--	--	--	--	--	--	--	---	-------------

iCLASS Card Programming Information

Format Number _____ (example: H10301) Bit Numbers _____ (example: 26 bit) Facility Code _____

Encoded Card # Start _____ Stop _____ Printed Card # Start _____ Stop _____

HID Elite ICE Number (if applicable) - _____ (Custom Format) Site Code _____ City Code _____ OEM Code _____

Special Instructions: _____

¹ For new artwork files, contact Customer Service for custom artwork number, lead-times, and cost.

² Cards ordered with plain white front and back packaging, or custom artwork, will still have a small HID logo and reference number printed in the lower left-hand corner and a slot punch target printed on the back of the card.

³ The Printed card number is placed in the bottom right-hand corner on the back of the card.

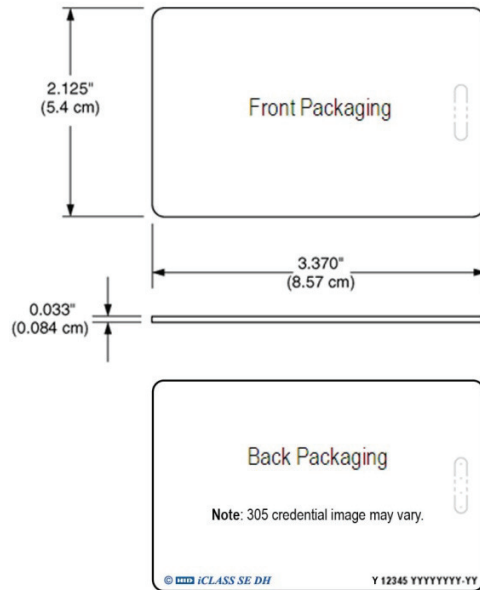
⁴ For Laser Engraved Printed numbers, consult factory for lead times and cost.

⁵ Cards are provided with an optional slot punch at no additional charge. Some video imaging printers cannot accommodate pre-slot punched cards.

⁶ The ability to add a horizontal slot punch requires a different iCLASS antenna design. Users can expect a read range reduction of approximately 20% if they order options B or H for the Slot Punch.

⁷ Please note that cards shipped within North America are always laser-engraved. Inkjetted option is not available for these cards.

* The composite construction is recommended for all cards with over-laminate applied. Consult with the printer manufacturer prior to ordering.



Y = iCLASS Programming
12345 = Card ID Number
YYYYYYY-YY = Sales Order Number