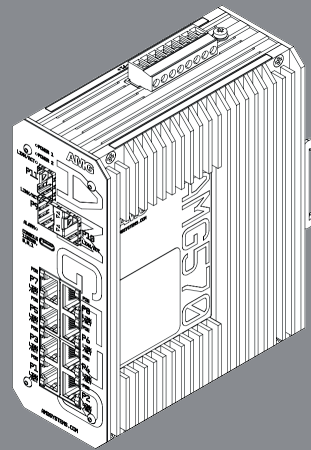




amg-support.com/AMG570-8G-3S_Series



AMG570

AMG570-8G-3S Series L2+ Industrial Managed Switch

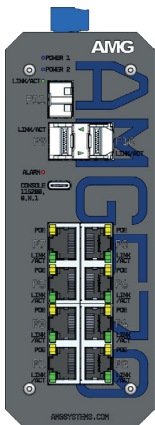
Installation Manual - Hardware

AMG Systems Ltd. 3 The Omega Centre, Stratton Business Park, Biggleswade, SG18 8QB, UK
T :: +44 (0) 1767 600 777 E :: sales@amgsystems.com
D36186-01 www.amgsystems.com

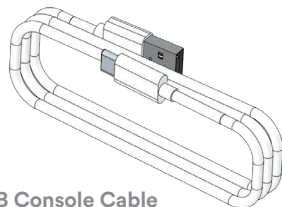
AMG

AMG
www.amgsystems.com

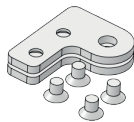
/ AMG570-8G-3S SERIES INCLUDED ACCESSORIES



AMG570 Switch



USB Console Cable

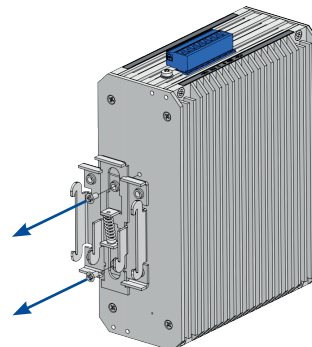


2 x Wall Mounting Brackets

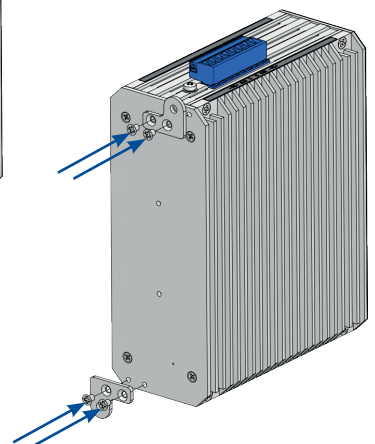
/ DIN RAIL MOUNT INSTALLATION



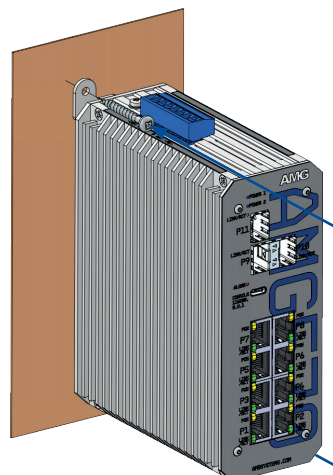
/ SURFACE MOUNT INSTALLATION



① Remove DIN rail clip by unscrewing the two fixing screws as shown.

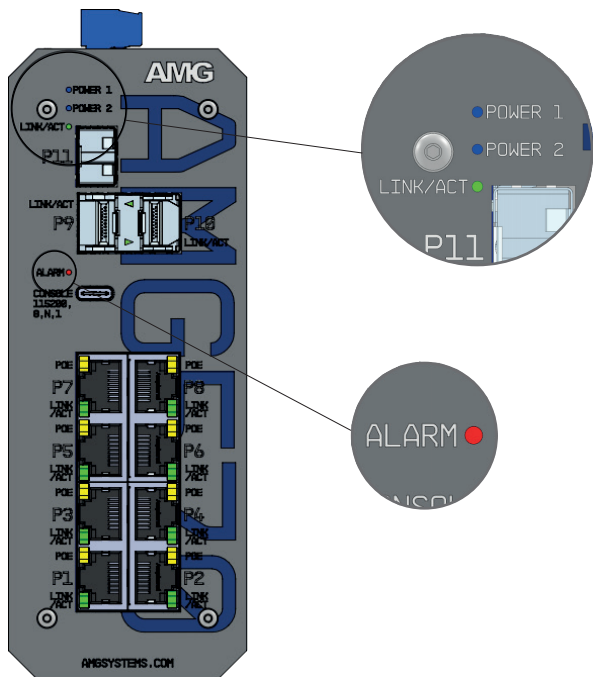


② Attach the two mounting brackets to the unit using the four fixing screws provided as shown.



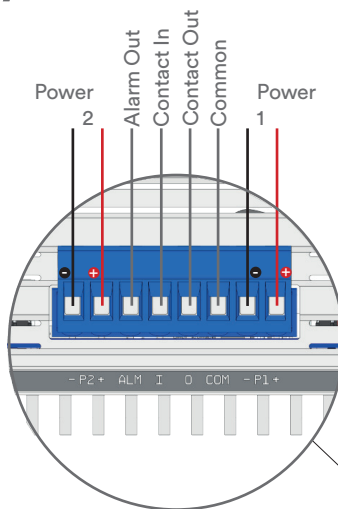
③ Fix the unit to the surface using two appropriate screws (not provided) as shown.

LED INDICATORS



LED	Colour	Description
POWER 1 / 2	Blue	DC input present on power 1 / 2
ALARM	Red	Unit in alarm condition
SFP LINK/ACT	Green	SFP link present (flashes with data traffic activity)
POE 1-8	Yellow	PoE is being delivered on the port
RJ45 LINK/ACT	Green	Ethernet link present (flashes with data traffic activity)

/ POWER



Warning
Check Polarity Before Powering
No Reverse Polarity Protection

Model Type	Voltage
Non-PoE Models	12-56 VDC
PoE Models	48-56 VDC*

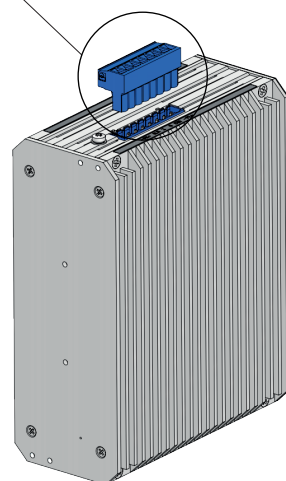
*50V or above recommended for 30W PoE
52V or above recommended for >60W PoE

Model Type	Power
All Models	10W Max*

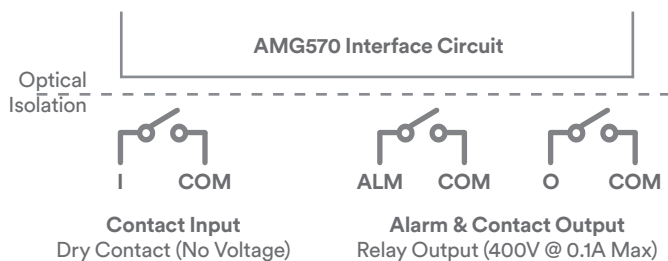
*Excludes PoE Load



Warning
Do not exceed the rated voltage
Refer to product label



/ CONTACT INPUTS & OUTPUTS



POE CAPABILITIES

Example part code:

AMG570-2G**BT**-4G**AT**-2G-3S-**P300**

Characters	PoE Standard Supported	Characters	PoE Budget
None	Non-PoE Model	P240	240W Max
AT	IEEE 802.3at 30W Per Port	P300	300W Max
BT	IEEE 802.3bt 60/90W Per Port	P360	360W Max

Check the product label to determine the PoE power supported on each port and the units total maximum PoE budget.

Ensure PSU size used is at least equal to the maximum PoE budget figure.



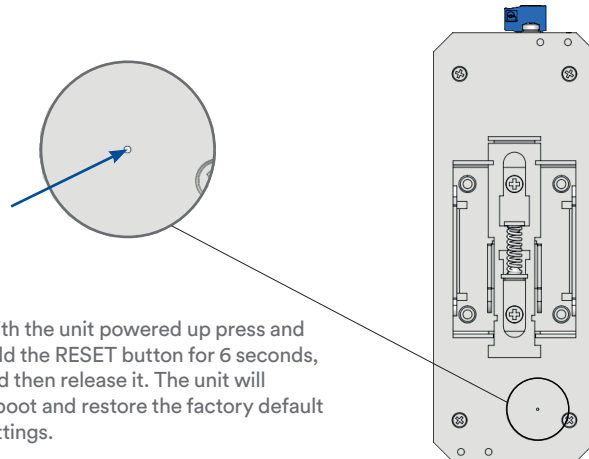
IEEE 802.3at Ports

Type 1 & 2 PoE supported
Mode A PSE only

IEEE 802.3bt Ports

Type 1, 2, 3 & 4 PoE supported
Mode A and/or Mode B PSE

DEVICE RESET PROCEDURE



With the unit powered up press and hold the RESET button for 6 seconds, and then release it. The unit will reboot and restore the factory default settings.

/ CONNECTING TO THE SWITCH



Web GUI

Default IP Address:	192.168.1.101
Username:	admin
Password:	admin

Console CLI

USB-A to USB-C Cable	115200,8,N,1
----------------------	--------------

To access the full software user guide for this product please visit the product page using the QR code opposite or the direct link below:

amg-support.com/AMG570-8G-3S_Series

