

AMG750 Series Industrial 4G Cellular Router

Installation Manual - Hardware

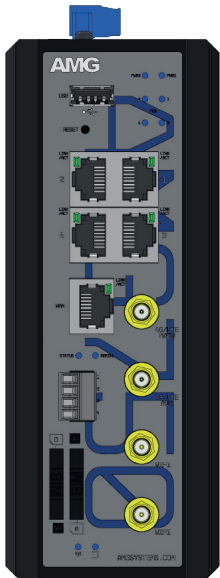
AMG750

AMG Systems Ltd. 3 The Omega Centre, Stratton Business Park, Biggleswade, SG18 8QB, UK
T :: +44 (0) 1767 600 777 E :: sales@amgsystems.com
D39169-00 www.amgsystems.com

AMG

AMG
www.amgsystems.com

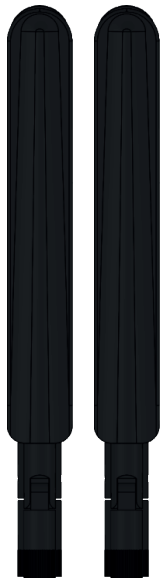
/ AMG750 SERIES INCLUDED ACCESSORIES



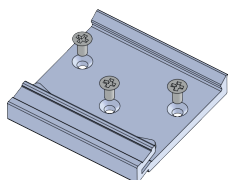
AMG750 Router



2 x 4G Antenna



2 x WiFi Antenna



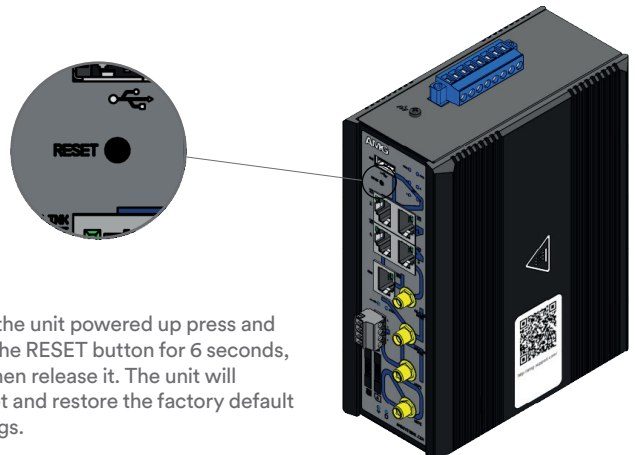
DIN Bracket

The 4G and WiFi antennas included with the AMG750 series are designed for short range applications only. Due to the close proximity of each antenna performance will be limited. It is recommended that external antennas are used for maximum performance.

/ DIN RAIL MOUNT INSTALLATION

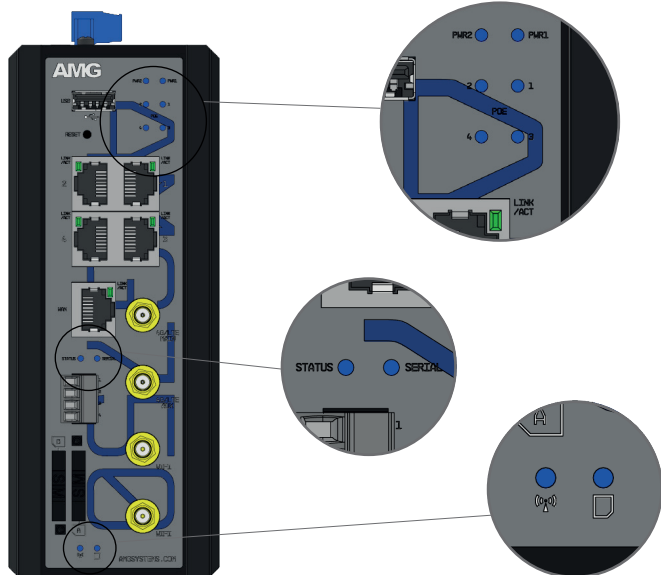


/ DEVICE RESET PROCEDURE



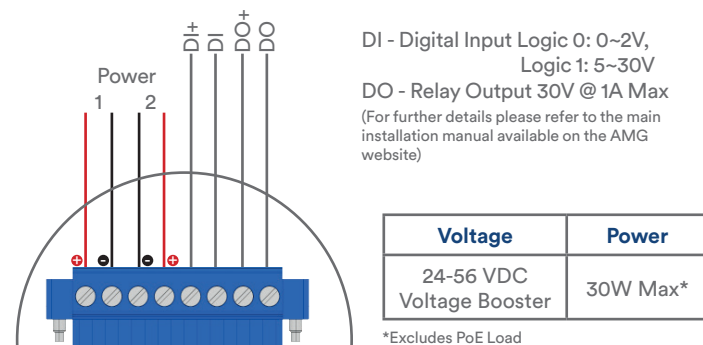
With the unit powered up press and hold the RESET button for 6 seconds, and then release it. The unit will reboot and restore the factory default settings.

LED INDICATORS

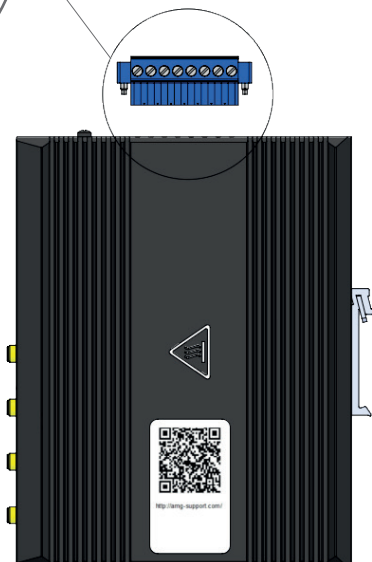
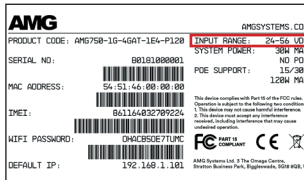


LED	Colour	Description
PWR 1 / 2	Blue	DC input present on power 1 / 2
STATUS	Blue	Device is running normally
SERIAL	Blue	Serial data in operation
POE 1-4	Blue	PoE is being delivered on the port
RJ45 LINK/ACT	Green	Ethernet link present (flashes with data traffic activity)
	Blue	WiFi is enabled
	Blue	Fast Flash = Cellular Signal 0~30% Slow Flash = Cellular Signal 31~60% Solid = Cellular Signal 61~100%

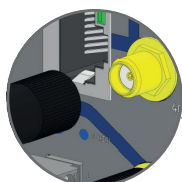
POWER



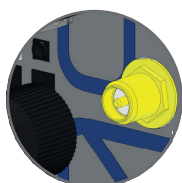
Warning
Do not exceed the rated voltage
Refer to product label



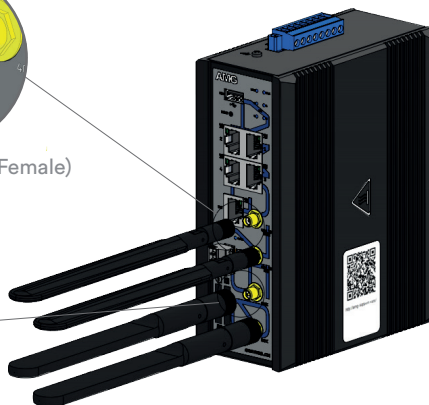
ANTENNA CONNECTIONS



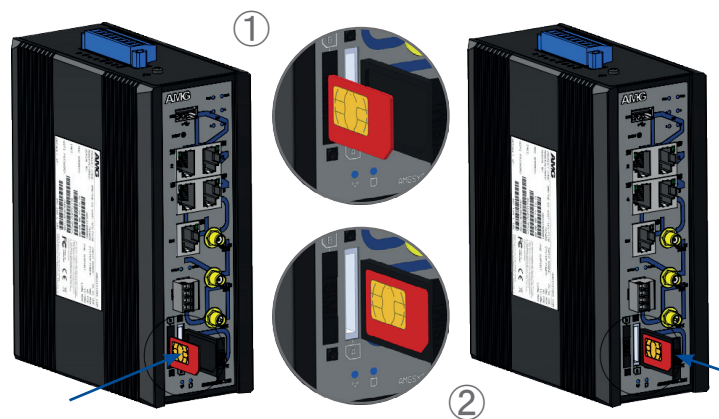
4G Antennas (SMA Female)



WiFi Antennas (SMA Male)

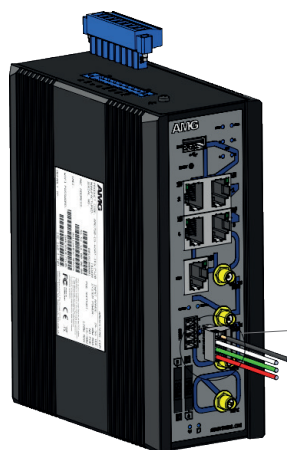


INSTALLING THE CELLULAR SIM CARD(S)

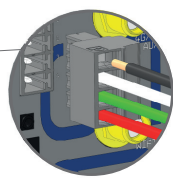


If using only 1 SIM card always install it into slot A

SERIAL DATA CONNECTIONS



- ① (Black) RS-232 & RS-485 = GND
- ② (White) RS-232 = RX Data
RS-485 = Data -
- ③ (Green) RS-232 = TX Data
RS-485 = Data +
- ④ (Red) RS-232 & RS-485 = GND



CONNECTING TO THE WEB GUI



Default IP Address:	192.168.1.101
Username:	Admin
Password:	Admin
WiFi SSID:	Staff
WiFi Password:	See Label On Unit

To access the full software user guide for this product please visit the product page using the QR code opposite or the direct link below:

amg-support.com/AMG750-1G-4GAT-1E4-P120

