



625 W. Alluvial
Fresno, CA 93711
USA

In North America & Canada:
Tel (800) 289-9100
FAX (800) 289-9150

International Customers: Tel
(1-559) 292-1981
FAX (1-559) 348-1120

www.pelco.com

C212M-C (6/20) PP350/PP450 Parapet Mount PP351/PP451 Rooftop Mount

IMPORTANT SAFEGUARDS AND WARNINGS

Prior to installation and use of this product, the following WARNINGS should be observed.

1. Installation and servicing should only be done by qualified service personnel and conform to all local codes.
2. Installation shall be done in accordance with all local and national electrical and mechanical codes utilizing only approved materials.
3. Use only installation methods and materials capable of supporting four times the maximum specified load.
4. Use stainless steel hardware to fasten the mount to outdoor surfaces.
5. To prevent damage from water leakage when installing a mount outdoors on a roof or wall, apply sealant around the bolt holes between the mount and mounting surface.

Please thoroughly familiarize yourself with the information in this manual prior to installation and operation.

DESCRIPTION

The PP350 and PP351 mounts were designed for outdoor use with small-size pendant domes, and the PP450 and PP451 are for outdoor use with medium-size pendant domes. The PP350 and PP450 models mount to parapets, while the PP351 and PP451 models mount to rooftops or other smooth horizontal surfaces. All models accommodate domes that use 1.5-inch NPT pipe.

The PP450 and PP451 can be used in applications where mounting and height clearances of models PP350 and PP351 are inadequate. Models PP450 and PP451 are higher by 9.72 inches (24.69 cm) and the overhang is increased by 14.77 inches (37.52 cm).

The mounts are designed to swivel within available clearance limits, which adds to the flexibility, easy maintenance, and usability of the configuration.

Manufactured from aluminum, the mounts include indexing bolts to secure the arm in position.

Models

PP350	Parapet mount for small-size pendant domes; mounts to inside or outside of parapet.
PP351	Rooftop or smooth horizontal surface mount for small-size pendant domes.
PP450	Same as PP350 except overhang clearance and height accommodate medium-size pendant domes.
PP451	Same as PP351 except overhang clearance and height accommodate medium-size pendant domes.

INSTALLATION

Before Beginning

The hardware to install the mount depends on your installation requirements. The mount has pre-drilled holes for use with 3/8-16 type hardware. (This hardware is not included with the mount.) Use as many of the mounting holes as possible. Pelco recommends 3/8-16 type fastening hardware. Multiple fastening positions facilitate mounting flexibility. For models PP350 and PP450, mount using a minimum of three fasteners on each side of the mounting plate. For models PP351 and PP451, mount using a minimum of two fasteners on each side of the mounting base. If necessary to prevent damage from water leakage, you should also have sealant (not supplied) to apply around the bolt holes between the mount and mounting surface.

WARRANTY AND RETURN INFORMATION

WARRANTY

Pelco will repair or replace, without charge, any merchandise proved defective in material or workmanship for a period of one year after the date of shipment.

Exceptions to this warranty are as noted below:

- Five years on FT/FR8000 Series fiber optic products.
- Three years on Genex® Series products (multiplexers, server, and keyboard).
- Three years on Camclosure® and fixed camera models, except the CC3701H-2, CC3701H-2X, CC3751H-2, CC3651H-2X, MC3651H-2, and MC3651H-2X camera models, which have a five-year warranty.
- Two years on standard motorized or fixed focal length lenses.
- Two years on Legacy®, CM6700/CM6800/CM9700 Series matrix, and DF5/DF8 Series fixed dome products.
- Two years on Spectra®, Esprit®, ExSite™, and PS20 scanners, including when used in continuous motion applications.
- Two years on Esprit® and WW5700 Series window wiper (excluding wiper blades).
- Eighteen months on DX Series digital video recorders, NVR300 Series network video recorders, and Endura™ Series distributed network-based video products.months on DX Series digital video recorders, NVR300 Series network video recorders, Endura™ Series distributed network-based video products, and TW3000 Series twisted pair transmission products.
- One year (except video heads) on video cassette recorders (VCRs). Video heads will be covered for a period of six months.
- Six months on all pan and tilts, scanners or preset lenses used in continuous motion applications (that is, preset scan, tour and auto scan modes).

Pelco will warrant all replacement parts and repairs for 90 days from the date of Pelco shipment. All goods requiring warranty repair shall be sent freight prepaid to Pelco, Clovis, California. Repairs made necessary by reason of misuse, alteration, normal wear, or accident are not covered under this warranty.

Pelco assumes no risk and shall be subject to no liability for damages or loss resulting from the specific use or application made of the Products. Pelco's liability for any claim, whether based on breach of contract, negligence, infringement of any rights of any party or product liability, relating to the Products shall not exceed the price paid by the Dealer to Pelco for such Products. In no event will Pelco be liable for any special, incidental or consequential damages (including loss of use, loss of profit and claims of third parties) however caused, whether by the negligence of Pelco or otherwise.

The above warranty provides the Dealer with specific legal rights. The Dealer may also have additional rights, which are subject to variation from state to state.

If a warranty repair is required, the Dealer must contact Pelco at (800) 289-9100 or (559) 292-1981 to obtain a Repair Authorization number (RA), and provide the following information:

1. Model and serial number
2. Date of shipment, P.O. number, Sales Order number, or Pelco invoice number
3. Details of the defect or problem

If there is a dispute regarding the warranty of a product which does not fall under the warranty conditions stated above, please include a written explanation with the product when returned.

Method of return shipment shall be the same or equal to the method by which the item was received by Pelco.

RETURNS

In order to expedite parts returned to the factory for repair or credit, please call the factory at (800) 289-9100 or (559) 292-1981 to obtain an authorization number (CA number if returned for credit, and RA number if returned for repair).

All merchandise returned for credit may be subject to a 20% restocking and refurbishing charge.

Goods returned for repair or credit should be clearly identified with the assigned CA or RA number and freight should be prepaid. Ship to the appropriate address below.

If you are located within the continental U.S., Alaska, Hawaii or Puerto Rico, send goods to:

Service Department
Pelco
625 W. Alluvial
Fresno, CA 93711

If you are located outside the continental U.S., Alaska, Hawaii or Puerto Rico and are instructed to return goods to the USA, you may do one of the following:

If the goods are to be sent by a COURIER SERVICE, send the goods to:

Pelco
625 W. Alluvial
Freno, CA 93711 USA

If the goods are to be sent by a FREIGHT FORWARDER, send the goods to:

Pelco c/o Expeditors
473 Eccles Avenue
South San Francisco, CA 94080 USA
Phone: 650-737-1700
Fax: 650-737-0933

REVISION HISTORY

Manual #	Date	Comments
C212M-A	5/99	Rev. A. Combined model PP350, PP351, PP450, and PP451 into one manual. Updated product description, installation instructions, and specifications. Added certifications.
C212M-B	5/01	Revised Figure 2 with new dimensions.
C212M-B	8/04	Removed agency logo on cover; updated Warranty and Return information.
C212M-C	6/20	Updated finish colors.

® Pelco, the Pelco logo, Spectra, Esprit, Genex, Legacy, and Camclosure are registered trademarks of Pelco.

™ Endura and ExSite are trademarks of Pelco.

© Copyright 2004, Pelco. All rights reserved.

Installing the Mount

1. Loosen the nuts holding the brake mounting plate. Loosen the nuts only enough to pull the arm out of the guide hoops (see Figure 1).
2. Remove the arm.
3. Install the mount.

PP350/PP450

Install the mounting plate to the inside or the outside of the parapet. Use a minimum of three fasteners on each side of the mounting plate. Depending on the type of parapet construction, install the mounting plate as close to the top of the parapet as possible. If the mounting plate is installed two to five inches from the top of the parapet, you can swing the dome back for maintenance as necessary (the dome will clear the top of the parapet). If necessary to prevent water damage, apply sealant around the bolt holes between the mount and mounting surface.

PP351/PP451

Install the mounting base to the rooftop or other smooth horizontal surface. Use a minimum of two fasteners on each of the four sides of the mounting base (a minimum total of eight fasteners). If necessary to prevent water damage, apply sealant around the bolt holes between the mount and mounting surface.

4. Reinstall the arm; lower the arm through the guide hoops until it stops at the bottom of the mounting plate.
5. Pull the wires through the arm starting from the bottom of the mounting plate; pull the wires out through the threaded opening at the top of the arm.
6. Pull the wires through the dome, and attach the dome to the end of the arm.
7. Make all electrical connections.
8. Move the arm and dome into the desired position.
9. Secure the brake mounting plate against the arm; tighten the nuts on the studs that hold the brake mounting plate in place.
10. To hold the arm in position, tighten the indexing bolts near the center of the brake mounting plate. If desired, drill into the arm through the holes in the brake mounting plate, install the indexing bolts, and tighten. **Important . . . Do not drill into existing wiring that may be pulled through the arm.**

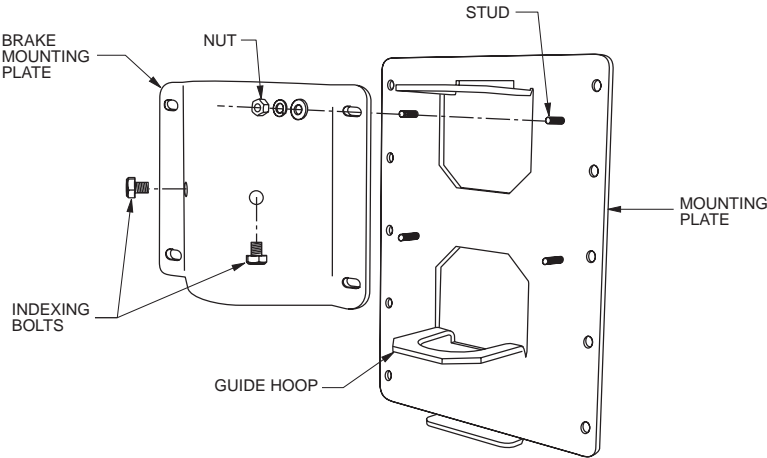
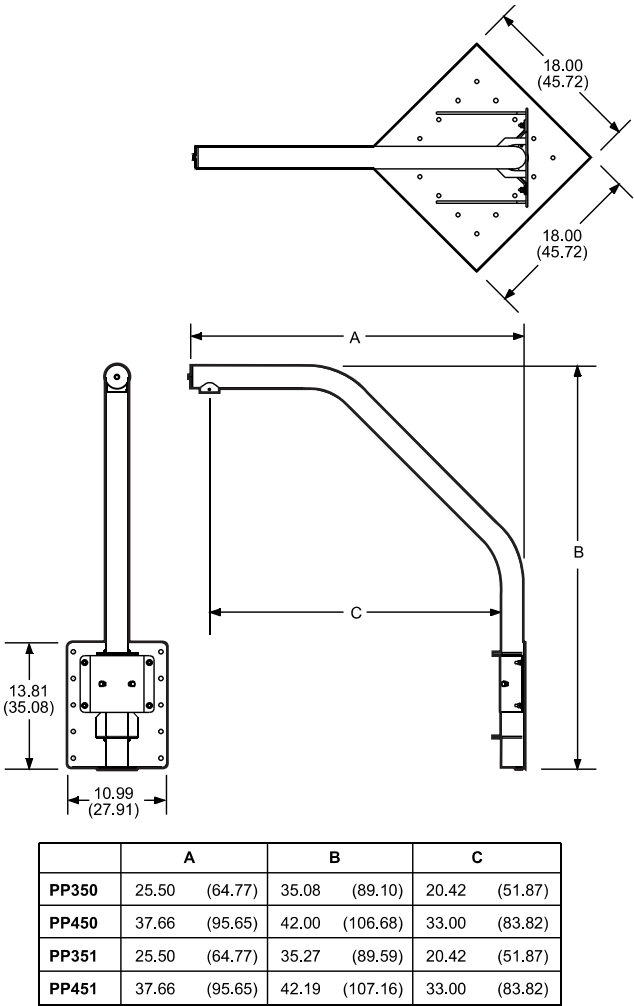


Figure 1. Mounting Diagram

SPECIFICATIONS

Material:	Aluminum
Mounting Method:	3/8-16 fasteners; minimum of 6 for PP350/PP450; minimum of 8 for PP351/PP451
Maximum Load:	45 lb (20.41 kg)
Dimensions:	See Figure 2
Finish:	Gray or white polyester powder coat
Weight	
PP350:	9.30 lb (4.22 kg)
PP351:	20.19 lb (9.16 kg)
PP450:	10.38 lb (4.71 kg)
PP451:	22.53 lb (10.22 kg)

(Design and product specifications subject to change without notice.)



NOTE: VALUES IN PARENTHESES ARE CENTIMETERS; ALL OTHERS ARE IN INCHES.

00599

Figure 2. PP350, PP351, PP450, PP451 Dimension Drawing