

## MC 200-6

## Aluminium Housing for Floor Installation for MC 240, 246 and 247

## Technical data

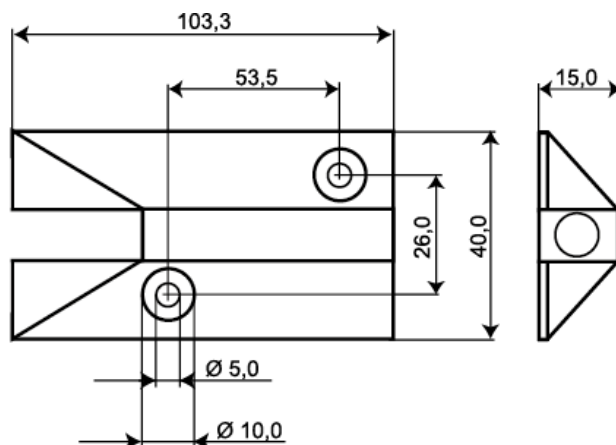
Installation method	Surface mount
Housing material	Aluminium
Dimensions (L x W x H) mm	104 x 40 x 15



Aluminium housing for floor installation in exposed environments such as garage doors etc.

Suitable for MC 240, 246 and 247.

The housing can carry the weight of a vehicle. Hole with set screw for stainless steel cable protection (MC Tx). Made of material that is especially corrosion-resistant even in highly corrosive environments.



## ORDERING INFORMATION

Typ	E-nr	Beskrivning
MC 200-6	6332752	Aluminiumkapsling för golvmontage