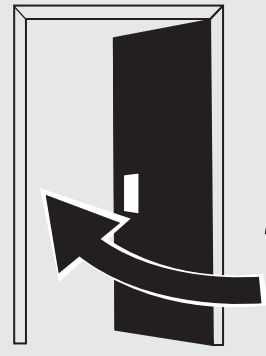


FOLD

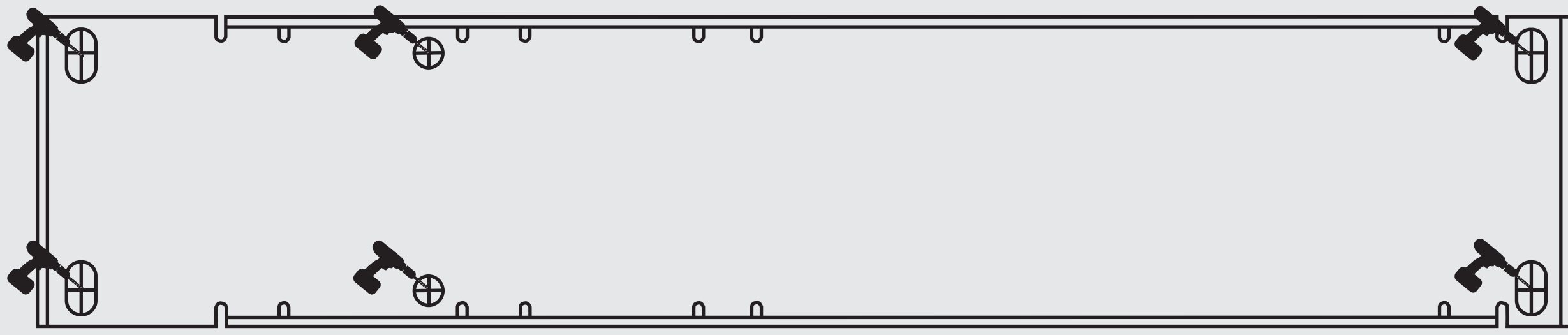
FOLD



2

Freedor SmartSound Installation Template

Hinge Right - Push Side



EDGE OF DOOR

Fireco

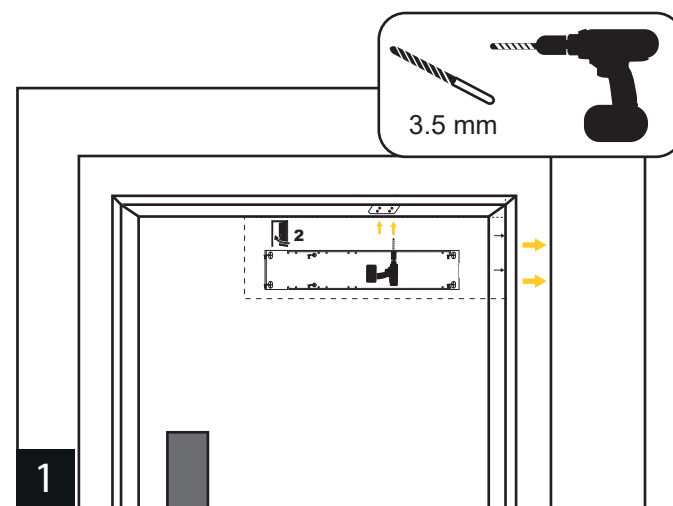
Freedor SmartSound Installation instructions

QR Code:

Scan for
Installation
Videos.

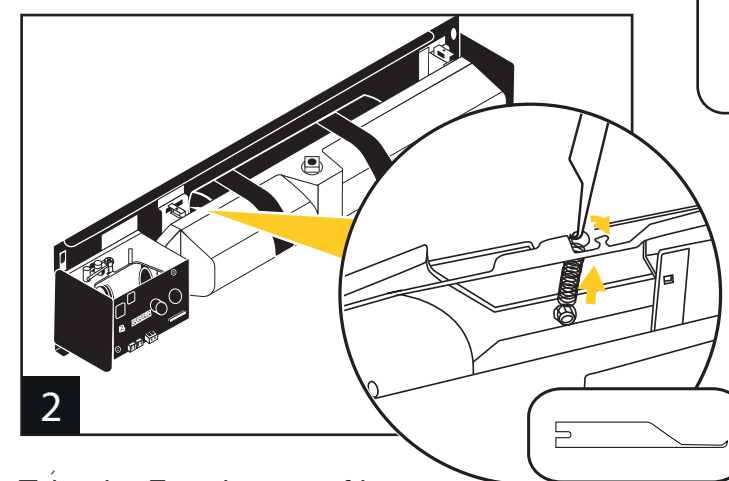


Or visit
[Fireco.click/2852](https://fireco.click/2852)



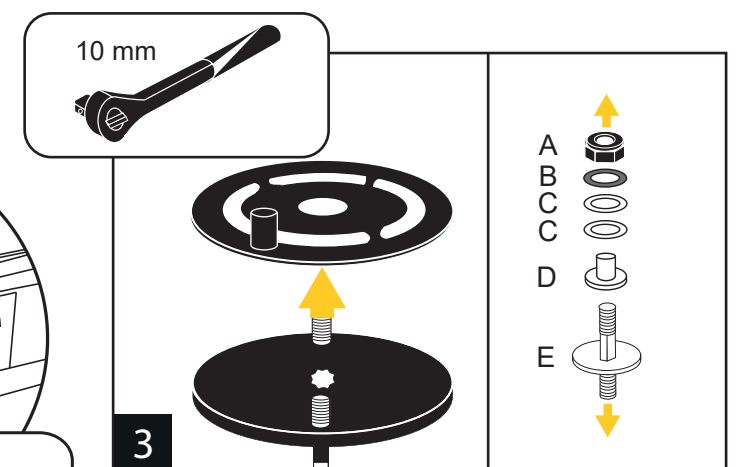
Remove the backing film from the adhesive pads supplied in Pack A and stick on the underside of the Freedor installation template, in the rectangles shown. Remove the top film and align the template with the edge of the hinge side of the door, with the dashed line along the top of the door. Fold over the top section along the dashed line.

Using the drill locations, mark through the template onto the door & underneath of the frame. Using a 3.5mm drill bit, drill the 10 pilot holes marked on the template.



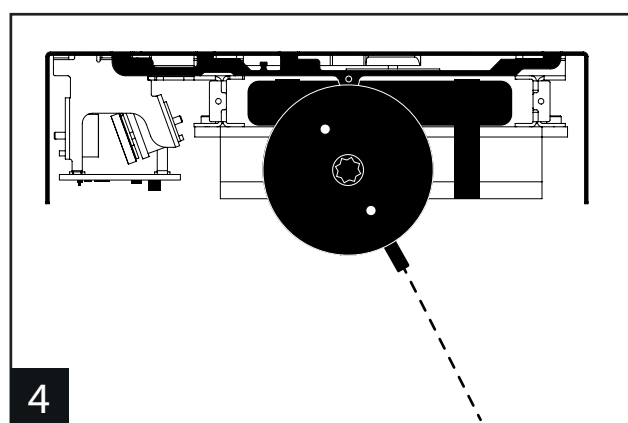
Take the Freedor out of its packaging, remove the 4 thumb screws and slide off the cover. Set to the side for now.

Locate the claw spring connected between the claw and the backplate. Using the installation tool supplied, hook the loose end of the spring over the hooked tab on the backplate. The claw should protrude from the top of the unit (refer to the graphics for the top side).

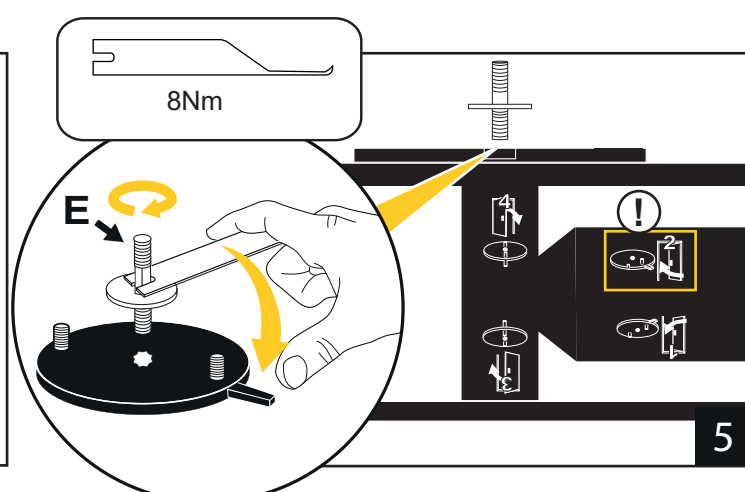


Take the upper and lower radial discs out of the packaging and separate them.

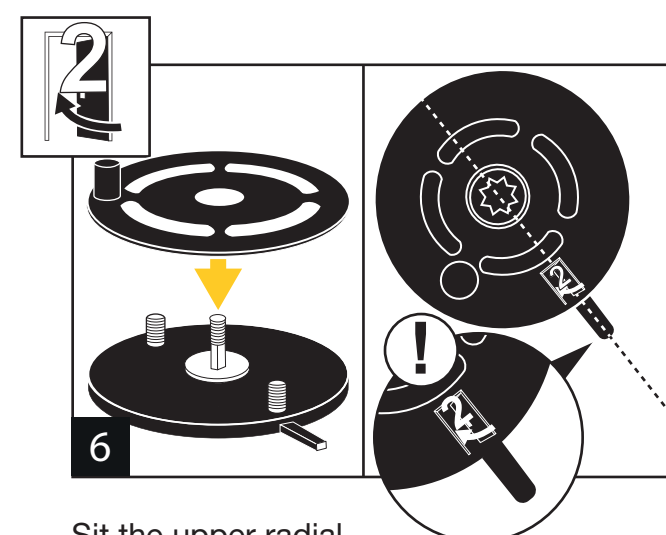
Disassemble the closer arm bolt assembly (A-E).



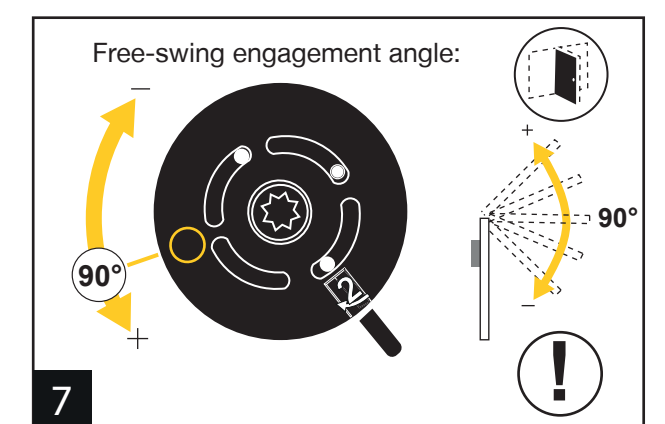
Place the lower radial disc on the square pinion of the closer so that the radial disc nib is facing the same direction as depicted in the graphics.



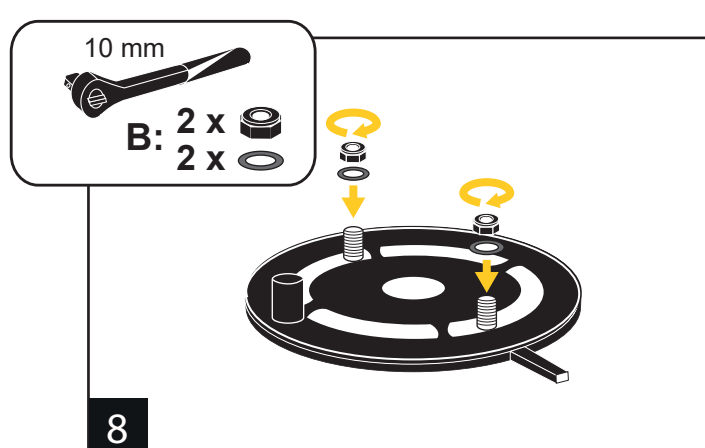
Securely fasten the lower radial disc to the closer with the closer bolt (E) using the other side of the installation tool.



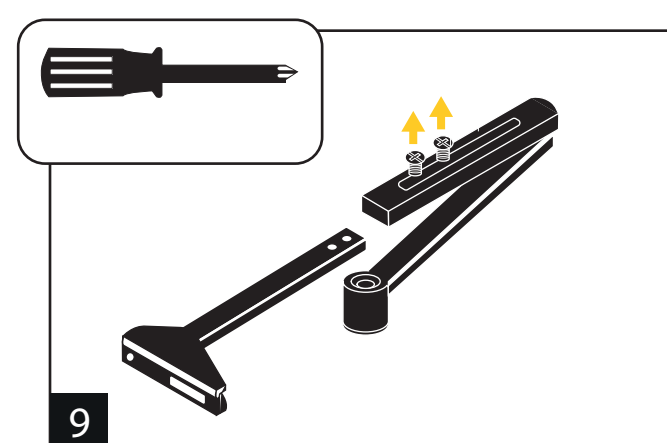
Sit the upper radial disc onto the lower radial disc with the correct number (2) in line with the lower radial disc nib.



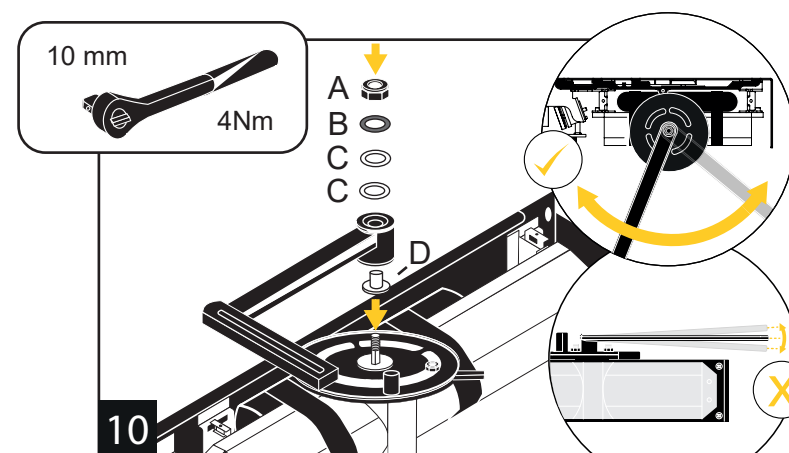
At this point the free-swing engagement angle can be adjusted by rotating the upper radial disc. Keeping the number in line with the nib will give a 90-degree free-swing engagement angle.



Fasten in place using the nuts and washers in Pack B.

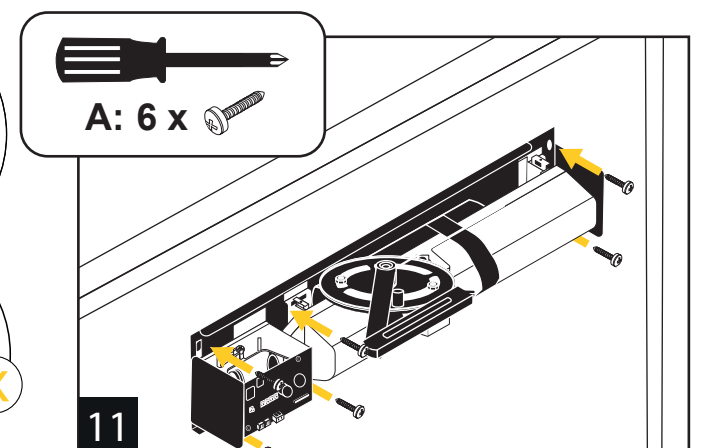


Take the closer arm out of its packaging and disassemble the two parts. Set the short screws to the side for now.



Fit the closer arm to the Freedor unit (closer bolt), ensuring that the washers are fitted in the correct order. Secure the nut using a 10mm socket.

DO NOT OVER-TIGHTEN - The arm should move from side to side freely but with no movement up and down.

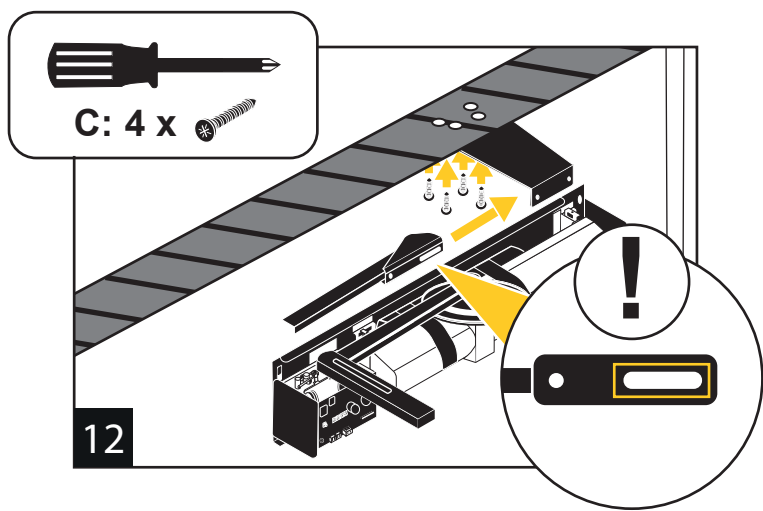
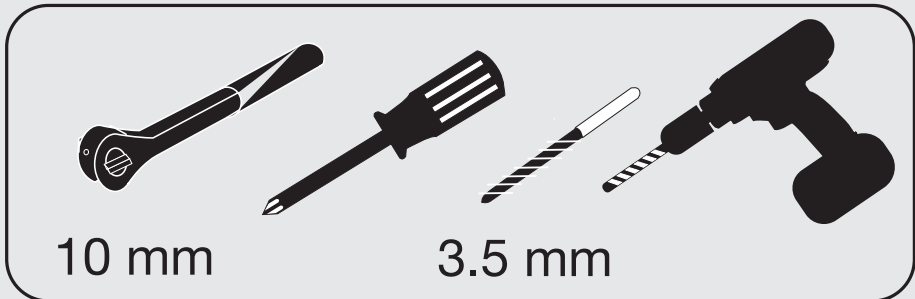
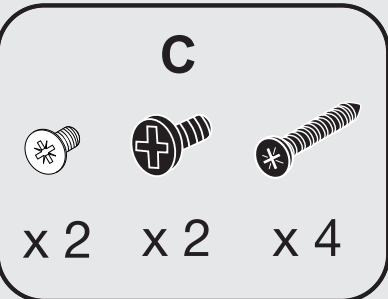
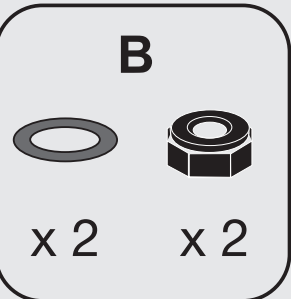
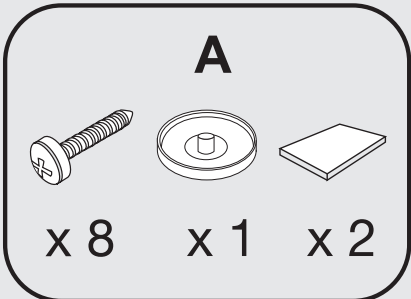
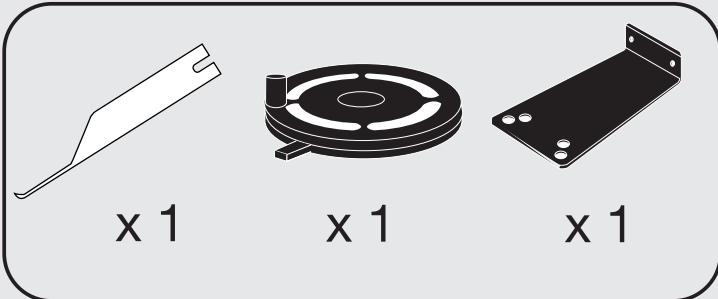
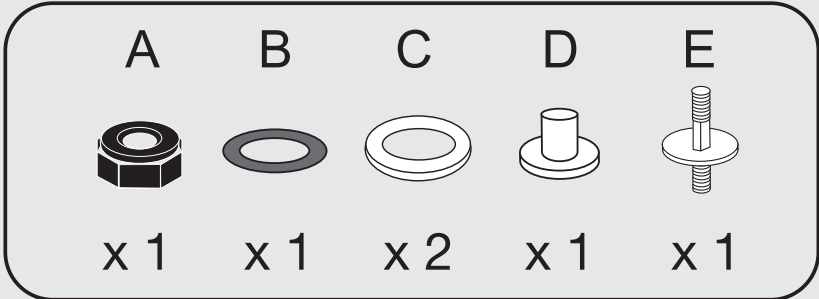
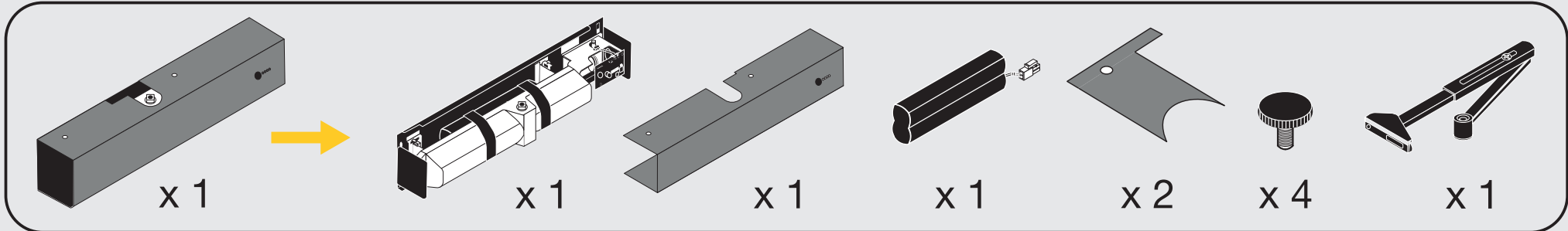


Remove the template from the door and fasten the Freedor into position using the 6 screws in Pack A. Match the orientation of the unit to the template used when making the pilot holes. Ensure the unit is level before tightening the screws fully.

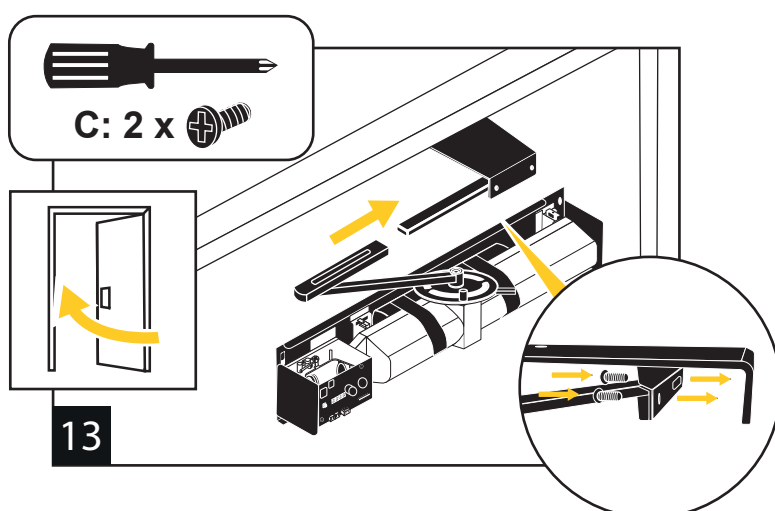
PLACE
STICKY
PADS HERE

PLACE
STICKY
PADS HERE

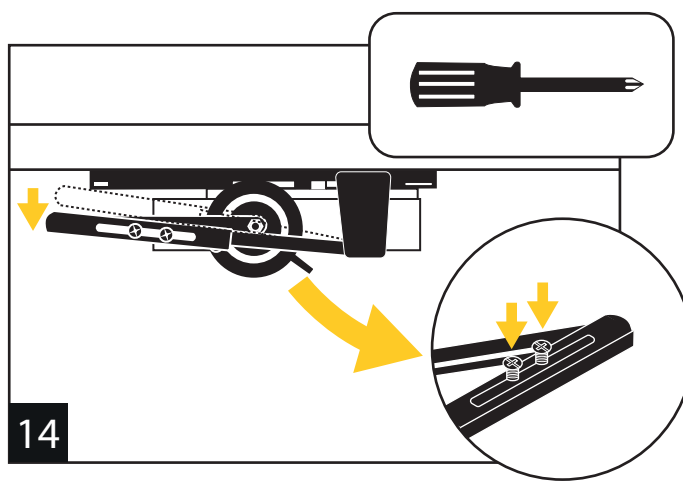
Contents & tools required:



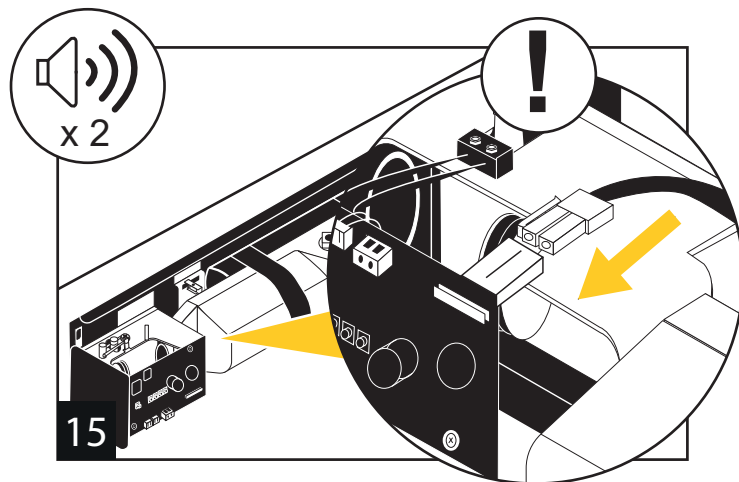
Take the parallel arm bracket and align it with the previously drilled pilot holes on the underside of the door frame. Fix in place using the 4 countersunk Bag C screws.



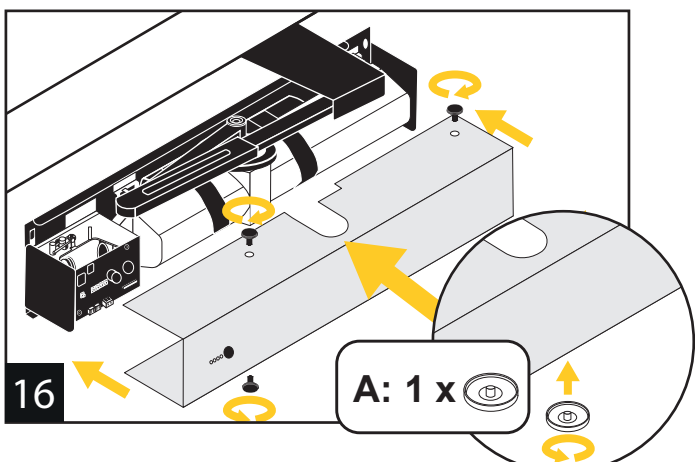
Take the wall mount closer arm section and fasten it onto the underside of the parallel arm bracket using the 2 pan head Bag C bolts. Make sure the wall mount closer arm base fixing is in the correct orientation shown in the graphics.



Connect the two halves of the closer arm. Rotate the arm so that it is parallel to the door, then fasten together using the two short screws (previously removed in diagram 9).

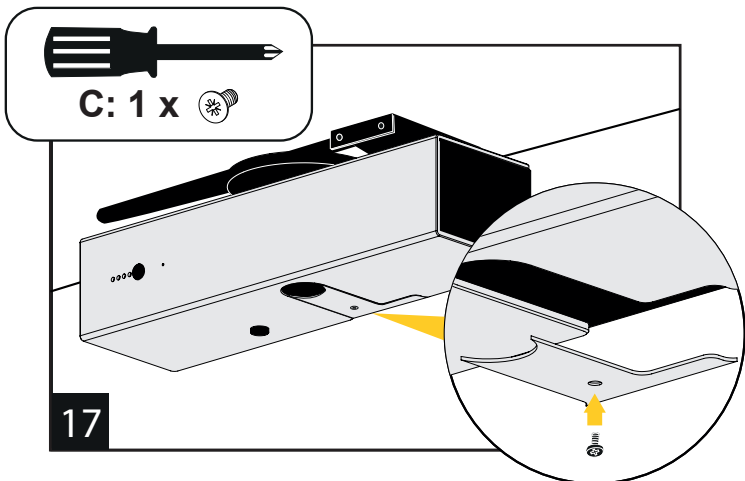


At this stage connect the battery harness cable to the power input connector. The unit will power up, flash its power LED, and beep twice. The Freedor will not engage into free-swing until its cover is on.

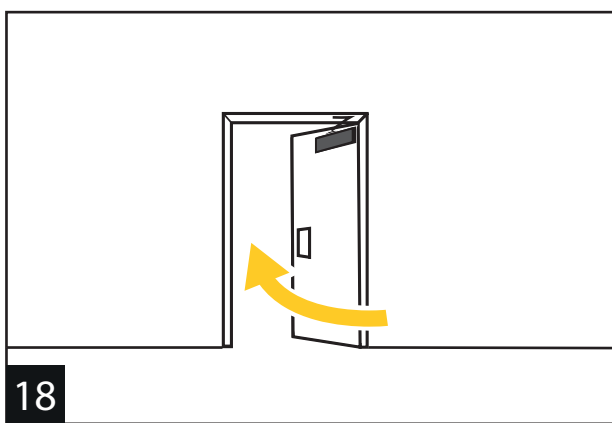


Slide the cover back on the Freedor, aligning the button with the hole on the front. Fasten in place using the 4 thumb screws.

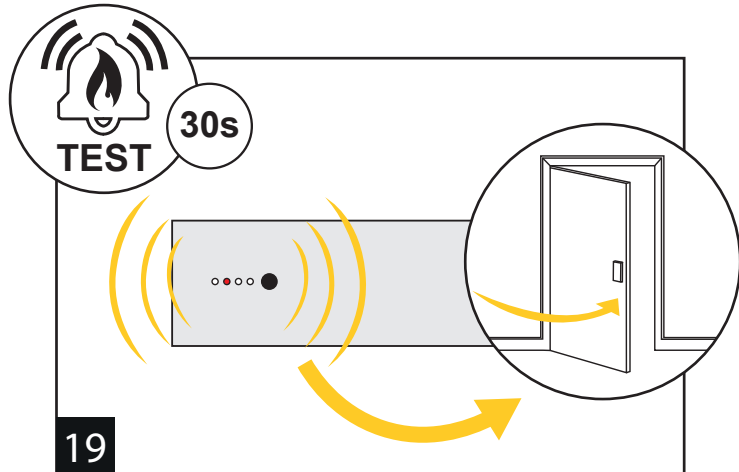
Screw on the pinion cap supplied in Pack A to the underneath of the Freedor's closer.



Remove the protective film from the correct blanking plate, and fit to the bottom of the Freedor using the screw supplied in Pack B. Do not fit a plate to the top, as this will prevent the unit from engaging into free-swing.



Open the door fully, and the Freedor should engage into free-swing. Leave the door open.



Trigger a fire alarm. The Freedor's FIRE LED will flash RED and the Freedor will release and close the door. Once the alarm test has finished, open the door to engage back into free-swing.

IMPORTANT: After installation give this to the customer

Troubleshooting:

- This device should be installed and maintained by a competent person. Where technical support is required please contact the installer.
- Further support documents, including **audio commands**, can be found using the QR code on the right.
- For sensitivity adjustment please contact the installer or Fireco customer service.

QR Code:
Scan for support documents.

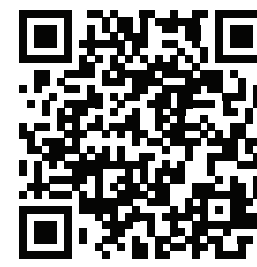


Or visit
fireco.click/7188

Maintenance:

- Test to the fire alarm each week.
- If your Freedor fails to engage in free-swing, a possible cause may be a low battery. To check the battery status, remove the cover and power cycle the unit by disconnecting and then reconnecting the battery cable. On reconnection, if both the Power LED and Alert LED display a red light, it indicates the need for a battery pack replacement. You can scan the QR code on the right which will take you to the battery pack purchase page.
- To ensure you get the longest life from your system, an annual preventative maintenance plan is recommended. Please consult your installer for details.

QR Code:
Scan for a replacement battery pack



Or visit
Fireco.click/8633

Freedor SmartSound warranty:

To maintain the warranty, give this card to the customer.

Serial number: _____
Location: _____
Date: _____

Contact details if you need further help:

- Email support@fireco.uk
- Call 01273 320650
- Live chat available at www.fireco.uk
- Access support documents & videos by scanning the QR codes

		EC		REP	
APPROVED PRODUCT CF 5968		Clever Representative AB Box 1898 116 74 Stockholm Sweden			
Registered address: 5 Grange Road, Southwick, BN42 4DQ, UK		19			
0757-CPR-232-9034548-1	EN1155:1997 + A1:2002 UKCA: 0843-21 CE: 0757 DoP 2021-08-16	3	5	3	1
2812-CPR-AE0028	EN1154:1997 + A1:2002 CE: 2812	4	8	3	1
Pro: 338-0604, 170-2053, 218-7342, 408-1075 SS: 504 7754, SS 510-7741, 660-4076, 984-8923 Electrically powered free-swing door closer					

Fireco



Freedor SmartSound
Installation Template
Hinge Right - Push Side