

SPC42

- ✓ 8 - 40 zones
- ✓ 4 doors / readers
- ✓ 40 wireless zones
- ✓ 4 Areas
- ✓ 100 Users in total
- ✓ Ethernet dialer onboard

SPC52/SPC53

- ✓ 8 - 128 zones
- ✓ 16 doors / readers
- ✓ 64 wireless zones
- ✓ 16 Areas
- ✓ 500 Users in total
- ✓ Ethernet dialer onboard

SPC63

- ✓ 8 - 512 zones
- ✓ 64 doors / readers
- ✓ 64 wireless zones
- ✓ 60 Areas
- ✓ 2500 Users in total
- ✓ Ethernet dialer onboard

G2 Cabinet

- ✓ Available as SPC42 and SPC52 series, SPCP332 Smart PSU
- ✓ Fits 7Ah 12V battery
- ✓ Room for 1 expander board

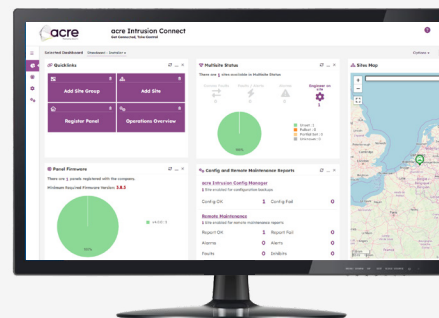
G3 Cabinet

- ✓ Available as SPC53 and SPC63 series, SPCP333 Smart PSU
- ✓ Fits 17Ah 12V battery
- ✓ Room for 4 expander boards

G5 Cabinet

- ✓ Available as SPC5350 and SPC6350 series, SPCP355 Smart PSU
- ✓ Fits 2x 27Ah 12V batteries
- ✓ Room for 6 expander boards
- ✓ VdS Class C

acre Intrusion Connect Management Platform



- ✓ Cloud-based application
- ✓ Access through web browser
- ✓ Encrypted communication between panel and cloud (FlexC 256bit AES)
- ✓ Support of full acre Intrusion panel range (min. Fw .3.8.5)
- ✓ acre Intrusion Connect Pro tool support

Installer Benefits

- ✓ Secured remote access from everywhere at any time via Web portal
- ✓ Company structure
- ✓ Installer/Engineer management
- ✓ Firmware upgrade management
- ✓ Remote maintenance reports
- ✓ Remote programming
- ✓ Configuration backups
- ✓ Communication monitoring
- ✓ Multi-site user management
- ✓ Support for Multi-site operations

End User Benefits

- ✓ Secured remote access from everywhere at any time via Web portal and mobile App
- ✓ Alarm verification via mobile (optional)
- ✓ Email and push notification
- ✓ Multi-site support
- ✓ Remote Panel User management

Keypads and X-Bus Peripheral

Keypads - Provide simple intuitive interfaces into the acre Intrusion system

SPCK42x

- ✓ Standard keypad
- ✓ 2x16 characters
- ✓ Optional EM card reader (421 model)
- ✓ Branded and non branded available
- ✓ EN Grade 3

SPCK52x

- ✓ Compact keypad
- ✓ 128x64 pixels graphical display
- ✓ Blue illuminated touch key keys
- ✓ Optional EM + MIFARE card reader (521 model)
- ✓ Thinnest security keypad on the market (17.5mm)
- ✓ Flush mount kit available
- ✓ Customizable logo in display
- ✓ EN Grade 3 & VdS C
- ✓ Embedded speaker (521 model)

SPCK62x

- ✓ Comfort keypad
- ✓ 128x64 pixels graphical display
- ✓ 15 user keys, 4 multi function keys and 1 navigation key
- ✓ Customizable logo in display
- ✓ Optional EM card reader (623 model)
- ✓ Embedded speaker/mic (623 model)
- ✓ EN Grade 3 & VdS C

PSUs - Monitored local power source for battery management and connected security devices

SPCP332

- ✓ Smart PSU with 8 inputs, 2 outputs in G2 housing. Also available in G3 (SPCP333) and G5 (SPCP355) housing

SPCP432

- ✓ Smart PSU with 2 door expander in G2 housing. Also available in G3 (SPCP433)

Communications - Modules that enable communication via PSTN, 2G/3G/4G with central monitoring stations (CMS)

SPCN110

- ✓ PSTN Plug-on module for acre Intrusion panels

SPCN320 / SPCN342

- ✓ 2G/3G/4G GSM/GPRS Plug-on module for acre Intrusion panels (max. 2 per panel)

Mobile App

acre Intrusion Connect (available in iOS and Android stores)

- ✓ Set, monitor, control. Any device, any location
- ✓ Door control
- ✓ User defined output control
- ✓ Multi-site support
- ✓ Control of acre Intrusion system
- ✓ Status of system
- ✓ Arming control
- ✓ Push notification
- ✓ Audio and video verification

Expanders & Gateways - Provide extended output capacity to the acre Intrusion system, including advanced door control and wireless functionality

SPCE652

- ✓ 8 input, 2 output expander (PCB only version also available)

SPCE452

- ✓ 8 output expander

SPCA210

- ✓ 2 door / reader expander

SPCE110

- ✓ Keyswitch with 3 positions 2 tri-colour LEDs

SPCE120

- ✓ Indication expander with 16 LEDs, 4 function keys & EM card reader

SPCW120

- ✓ Wireless RF expander for wireless devices - for panel