

# CONICAL HEAD (ABSo19C-HO)



Sold either as part of a conical sampling kit (ABSo19C) or individually, it is fed to a ceiling tile or chill or frozen store ceiling with the nut or washer (supplied) to sample air. The conical shape is specially designed to avoid ice or condensation from freezing over or covering the sampling hole. The 10mm OD tubing is a push fit to the top of the conical head, linking it to the capillary T piece.

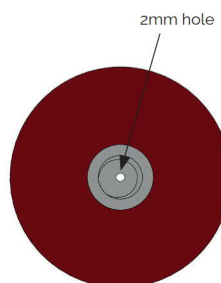
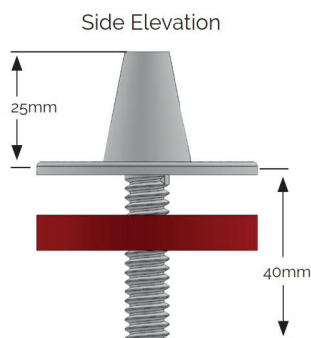
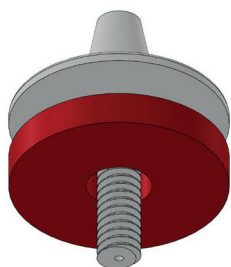
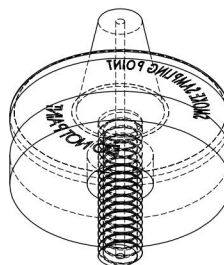
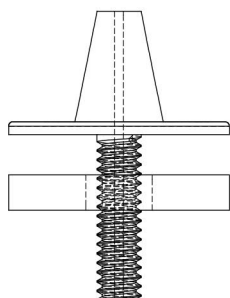
## Installation Instructions:

Do not paint. Keep pipe clean and free from dust. Do not install in direct sunlight. Only install with approved pipe. Do not use solvents to clean, only soapy water.

**PART NO.:**  
ABSo19C-HO

**PIPE COLOUR:**  
Red

**DIAMETER TOLERANCE:**  
+ / - 0.15mm



## RAW MATERIAL DATA

### Physical

Specific Gravity:  
Test Method ASTM D792

### Melt Mass - Flow Rate (MFR)

200C/5.0Kg 2.6g/10 min  
220C/10Kg 33g/10min  
Test Method ASTM D1238

### Moulding Shrinkage

Flow 0.0040 to 0.0070 in/in  
Test Method ASTM D955

### Mechanical

Tensile Strength  
Yield 5510psi 0.118 in (3.00mm)  
Tensile Elongation: 22%  
Break 0.118 IN (3.00mm)  
Test Method ASTM D638

### Flexural Modulus

284000psi 0.236 in (6.00mm)  
Test Method ASTM D790

### Flexural Strength

8390psi 0.236 in (6.00mm)  
Test Method ASTM D790

### Impact

Notched IZOD Impact  
73F (23C) 0.118 in (3.00mm)  
4.6ft-lb/in  
73F (23C) 0.236 in (6.00mm)  
3.3ft-lb/in  
Test Method ASTM D256

### Hardness

Rockwell Hardness (R-Scale)  
103  
Test Method ASTM D785

### Thermal

Deflection Temperature  
Under Load 264psi (1.8 MPa)  
Unannealed 181/83t  
Viscal Softening Temperature  
214/101t  
Test Method ASTM D1525

### Flamability

Flame Rating  
0.0630 in 1.60mm HB  
Test Method UL94