

COMPRESSION ADAPTOR

(ABS036 - 25mm)



This component is used where there is the requirement to reduce from 25mm pipe to a 10mm nylon tube to sample through a range of sampling heads. The 10mm tubing simply push fits and clicks into position, and can be released by pushing on the blue ring.

Installation Instructions:

Use the correct solvent Plusbond 3019. Do not paint. Keep pipe clean and free from dust. Do not install in direct sunlight. Only install with approved pipe. Do not use solvents to clean, only soapy water.

PART NO.:
ABS036 - 25

PIPE COLOUR:
Red

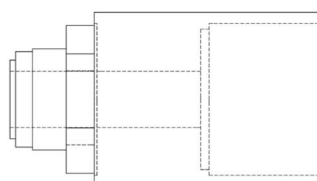
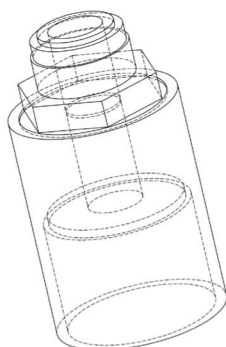
OPERATING TEMP:
- 40 c to 70 c'

WEIGHT:
23.2g

**FITTINGS
COLOUR:**
Red

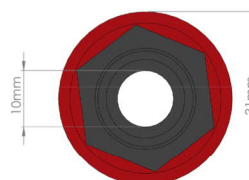
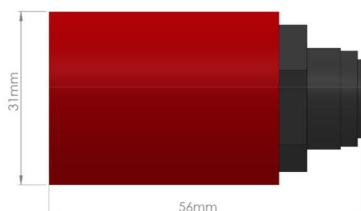
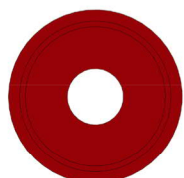
**DIAMETER
TOLERANCE:**
+ / - 0.15mm'

WALL THICKNESS:
2mm



Side Elevation

Front Elevation



RAW MATERIAL DATA

Physical

Specific Gravity:
Test Method ASTM D792

Melt Mass - Flow Rate (MFR)

200C/5.0Kg 2.6g/10 min
220C/10Kg 33g/10min
Test Method ASTM D1238

Moulding Shrinkage

Flow 0.0040 to 0.0070 in/in
Test Method ASTM D955

Mechanical

Tensile Strength
Yield 5510psi 0.118 in (3.00mm)
Tensile Elongation: 22%
Break 0.118 IN (3.00mm)
Test Method ASTM D638

Flexural Modulus

284000psi 0.236 in (6.00mm)
Test Method ASTM D790

Flexural Strength

8390psi 0.236 in (6.00mm)
Test Method ASTM D790

Impact

Notched IZOD Impact
73F (23C) 0.118 in (3.00mm)
4.6ft-lb/in
73F (23C) 0.236 in (6.00mm)
3.3ft-lb/in
Test Method ASTM D256

Hardness

Rockwell Hardness (R-Scale)
103
Test Method ASTM D785

Thermal

Deflection Temperature Under
Load 264psi (1.8 MPa) Unan-
nealed 181/83t
Viscal Softening Temperature
214/101t
Test Method ASTM D1525

Flamability

Flame Rating
0.0630 in 1.60mm HB
Test Method UL94

