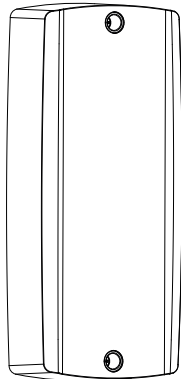




W-XPR-EXT

Installation Instructions



External Wireless Expander,
Repeater & Bridge

www.orisec.co.uk

Introduction

The W-XPR-EXT External Wireless Expander, Repeater & Bridge can function as:

- A Wireless Expander
- A Wireless Repeater
- A Wireless Bridge

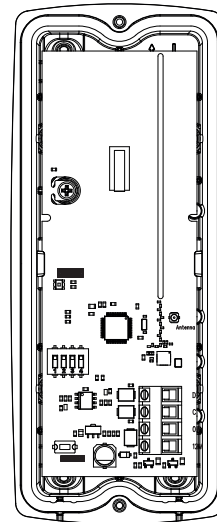
When used as a wireless Expander it can be connected anywhere on the Orisec bus-network to add wireless capability to hard-wired / hybrid systems.

When used as a Wireless Repeater it can effectively double the wireless range of a system.

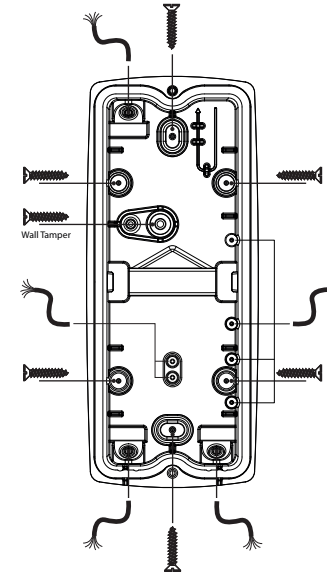
When used as a Wireless Bridge it can join a subsystem that is connected to a PZX-10 expander to a control panel equipped with a wireless interface.

1 Installation

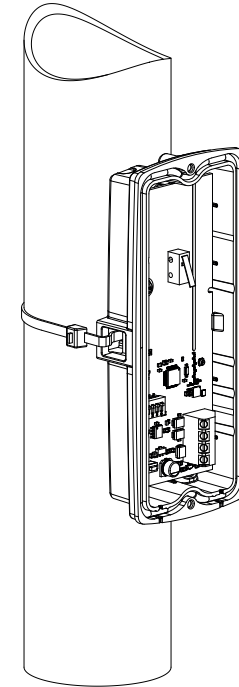
IMPORTANT: Always mount the W-XPR-EXT Vertically.



Seal all cable entry holes and screw heads.



Optional pole mount using cable ties



Key Features

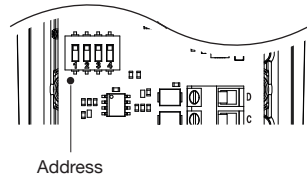
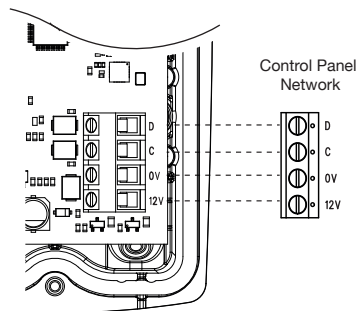
- IP65 For External Use
- Up to 100 Wireless Zones*
- Up to 100 Keyfobs*
- Wireless Expander
- Wireless Repeater
- Wireless Bridge
- 2 Way Wireless Communications
- Digital Thermometer
- Frequency Hopping Technology
- Grade 2

*Panel Dependent

2 Wireless Expander

To operate as a Wireless Expander connect to the control panel network as shown below.

Each expander must be assigned a different address using the 4-way address switch as shown below.



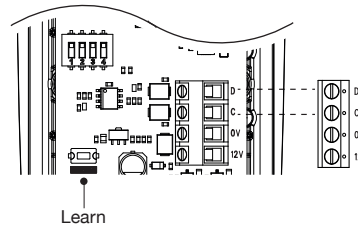
3 Wireless Repeater

To operate as a Wireless Repeater connect the 12V and 0V to an auxiliary power source as shown below.

The repeater should then be learned on the control panel as follows:

- Enter Engineering Mode
- Select 'Setup Wireless Zones'
- Highlight the required zone
- Scroll down to 'ID' (Learn will be displayed on the bottom right)
- Press and hold the 'Learn' button on the device and apply power
- After 2-3 seconds release the 'Learn' button
- Press the 'Learn' button 1-5 times to learn in the device.

Products that can act as repeaters cannot themselves be repeated. For a full list of products that can be repeated please see this link: www.orisec.co.uk/compatible-products



4 Wireless Bridge

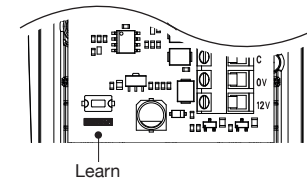
To operate as a Wireless Bridge connect the W-XPR-EXT to the Orisec PZX-10 or PRX-INT as shown.

Only one networked device can be added to a single W-XPR-EXT operating as a wireless bridge.

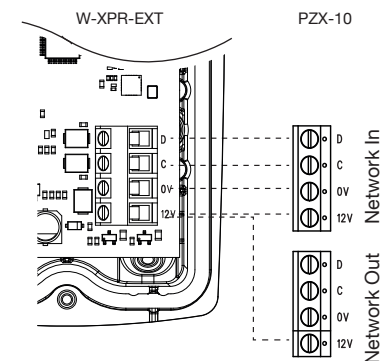
An W-XP or W-XP-R needs to be installed locally at the Control Panel.

The bridge should then be learned on the control panel as follows:

- Enter Engineering Mode
- Select 'Setup Wireless Zones'
- Highlight the required zone
- Scroll down to 'ID' (Learn will be displayed on the bottom right)
- Press and hold the 'Learn' button on the device and apply power
- After 2-3 seconds release the 'Learn' button
- Press the 'Learn' button 1-5 times to learn in the device.



NOTE: The W-XPR-EXT can only be assigned to zones 1-50 on the control panel. It is highly recommended to leave an available slot each side of the W-XPR-EXT.
For Tamper monitoring on the W-XPR-EXT the zone type must be programmed as "Wireless Tamper". On the keypad: Enter engineering mode, Select "Programming menu", Select "Zone programming", Scroll to the W-XPR-EXT zone, Select Zone Type 32 "Wireless Tamper"



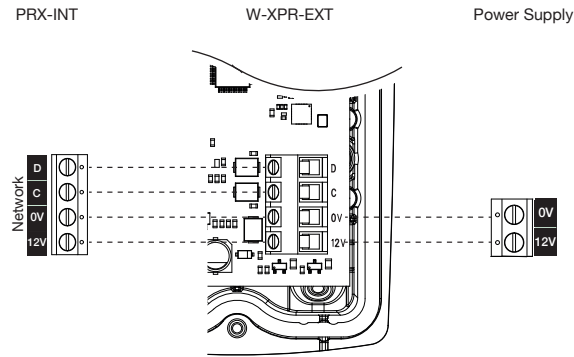
Once configured the PZX-10 will be seen in "Confirmed Devices".

Please refer to the PZX-10 Installation Manual for additional information.

*N.B. Only the zone inputs can be utilised on the PZX-10

5 Connecting an Orisec Prox Reader

The W-XPR-EXT can also be used to wirelessly connect an Orisec Prox reader to an Orisec system.



*N.B. Please refer to the PRX-INT installation manual for additional information.

Regulatory



WEEE Directive: 2012/19/EU
Compliant: This symbol indicates that according to local laws and regulations, this product should not be disposed of as municipal/household waste. Instead, it should be disposed of at the appropriate collection points designated for the recycling of electrical and electronic equipment, or returned to Orisec upon purchase of new replacement products.

RoHS

RoHS Directive: 2011/65/EU
Compliant:
Orisec declares that this product complies with and conforms to RoHS legislation that it does not contain more than the agreed levels of: Lead (Pb), Cadmium (Cd), Mercury (Hg), Hexavalent chromium (Cr6+), Polybrominated biphenyls (PBB), Polybrominated diphenyl ethers (PBDE)

Specification

Dimensions (whd) mm	67 x 158 x 36
Housing Thickness	2.5mm
Operating Temperature	-20°C to +55°C
Storage Temperature	-35°C to 60°C
Maximum Humidity	95% non-condensing
Product Weight	130g
Packed Weight	200g
Maintenance	Annual Installer Check
Frequency	868.65 MHz and 869.15 MHz

Standards and Approvals

Security	PD 6662:2017 EN 50131-3:2009 EN 50131-5-3:2017 Grade 2, Class II
EMC / False Alarm Immunity	EN 50130-4:2011 +A1:2014 EN 301 489-3 V1.6.1
Radiated Immunity:	80MHz to 2.7GHz
Electrostatic Discharge:	+/- 8kV
Fast Transient Immunity:	2kV
Radiated Emissions:	EN 55032:2015+ A11:2020 EN 300 220-2 V2.3.2

Hereby, Orisec Ltd declares that the W-XPR-EXT conforms to: European Union (EU) Electro-Magnetic Compatibility (EMC) Directive 2014/30/EU
EMC Environment: Residential / Commercial / Light Industrial / Industrial
Conforms to RE Directive 2014/53/EU



Manufacturer: Orisec Ltd, 1 St Crispin Way,
Haslingden, Lancashire. BB4 4PW. United Kingdom

Warranty

The W-XPR-EXT is guaranteed against defects in material or faulty workmanship for a period of 2 years from the date of purchase.

Disclaimer: Orisec will not accept any liability based on a claim that the W-XPR-EXT failed to perform correctly as it is a component part of an installation and not a complete intruder alarm system.



Designed and Manufactured
in the United Kingdom

Manufacturer: Orisec Ltd, 1 St Crispin Way,
Haslingden, Lancashire. BB4 4PW. United Kingdom



UK Based Technical Support:
t: +44 (0) 1706 398740
e: support@orisec.co.uk