

### INSTRUCTION MANUAL

The Multispeech 4 is a four channel speech enunciator module designed for security, access control, welcoming, advising or warning. The module can be configured to accept any normally open or normally closed device. This gives a greater flexibility to use any detection device, alarm panel, panic button, telephone responder or activation from a Remote Video CCTV Monitoring Station

A separate 20 second message can be recorded on each of the four channels or alternatively one single message of 90 seconds long. Each of the four messages can be played back separately by triggering the corresponding input.

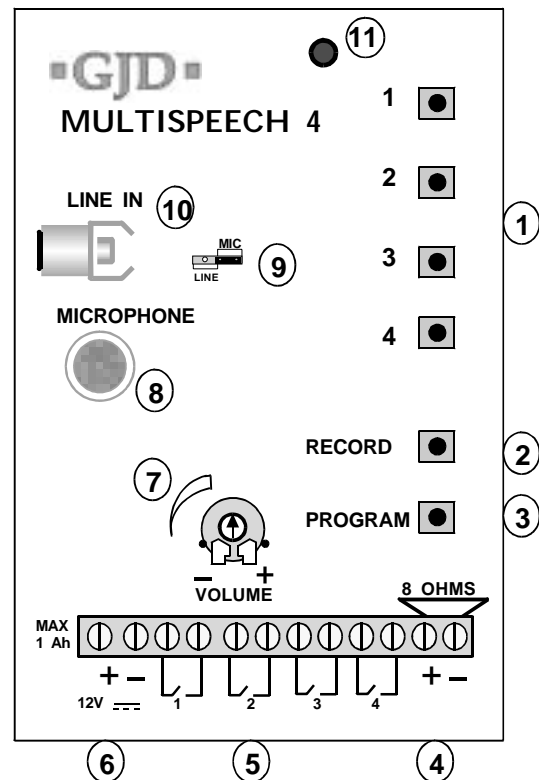
The Multispeech is a module for mounting inside a host system cabinet using the four self adhesive supports supplied. It provides an 8 Ohm audio output that can be applied to a loudspeaker or to a dialer that has a speech processor input. Recording can be made using the on board microphone or alternatively by a 1 V p-p line input.

#### SPECIFICATIONS

Recording time:	one single message of 90 seconds maximum or four individual messages of 20 seconds.
Memory type:	EEPROM (non-volatile memory)
Channel input type:	Four individual normally open or normally closed triggers
Audio output:	Maximum 8W @ 8 Ohms minimum (loudspeaker power handling min. 8W impedance min 8 ohms)
External audio input:	1 V p-p maximum (jumper selectable)
Supply Voltage:	9VDC to 15VDC
Current Consumption:	stand by 3mA - record 38mA peak 1 Amp max. (playback into loudspeaker)
Features:	Pulse Count selectable (1 to 3) Optional preceding message alert Re-trigger period between 1 and 30 seconds Linking message outputs
Operating Temp.	-10 + 50 degrees centigrade
Dimensions	100mm x 77mm x 40mm (including supports)
Weight:	60g (including supports)

## FUNCTIONS

- 1) Four individual channel buttons
- 2) Record button
- 3) Program Button
- 4) Speaker output
- 5) Four individual alarm inputs
- 6) 12VDC Input
- 7) Volume control (+ = maximum)
- 8) Microphone
- 9) Line in or onboard microphone selector
- 10) External source 'line in' phono socket (1V p-p maximum)
- 11) Status LED indicator



## CUSTOMISING

All factory set parameters can be changed to suit individual requirements. The highlighted areas on the programming chart show the factory settings which suit most applications. Any changes are stored in the non-volatile memory.

## PROGRAMMING

To enter the program mode select and hold the program button first. When changing Options or Settings use a one second button press.

- 1) First press and hold down the Program button on the module.
- 2) Then press the selected channel button for the number of the required 'Option'. (e.g. Pulse count press the channel button twice)
- 3) Wait four seconds until the indicator goes out.
- 4) The indicator will flash out the existing 'Setting' and after five seconds 'wait time' the unit will return to standby.
- 5) To change the 'Setting' for that option press the channel button, within this wait time, for the number of the required 'Setting' ( e.g. Pulse count 3 press the channel button three times)
- 6) The indicator blinks twice and the changes are stored.
- 7) To finish at any time - release the buttons - the unit returns to standby.

## EXAMPLE:

To link channel '1' recording to be followed by channel '2' recording.

- a) first press and hold down the Program button on the module
- b) press the channel '1' button five times for 'Link'
- c) wait until the red indicator goes out
- d) the indicator will then flash out the existing setting for that channel
- e) press the channel '1' button twice
- f) release button - the unit returns to standby

# PROGRAMMING CHART

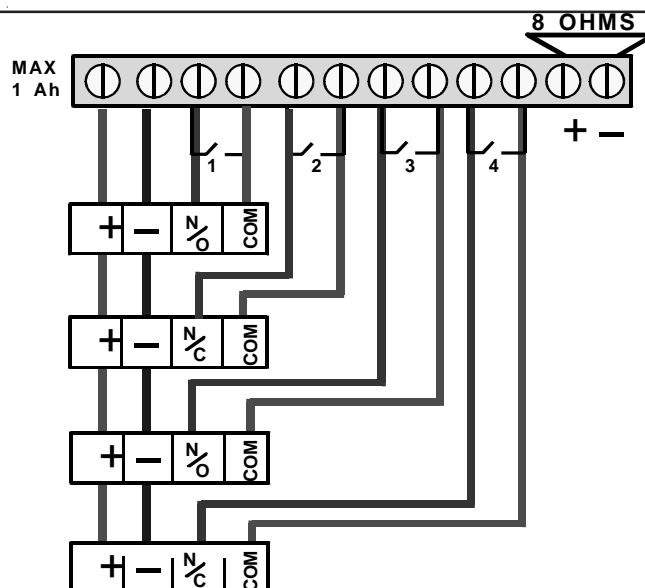
Press			wait for indicator to go out									
OPTIONS	Once - set Input	then x for	1 N/O	2 N/C								
	Twice - set Pulse Count	then x for	1 1	2 2	3 3							
	Three - set Pre-Noise	then x for	1 NO	2 SH	3 BNG							
	Four - set Mute Period	then x for	1 1	2 2	3 5	4 10	5 15	6 20	7 30			
	Five - set Links	then x for	1 STD	2 1&2	3 1to3	4 1to4	5 90S					
	Six - set links hold time	then x for	1 1	2 2	3 5	4 10	5 15	6 20	7 30			
	factory settings highlighted		SETTINGS									
	Seven = flashout of above settings											
Eight = reset GJD factory defaults												

Input	All channels can be programmed to accept normally open or normally closed triggers.	
Pulse Count	The number of alarm triggers before playing the message.	
Message Alert	NO	Factory setting of no message alert
	SH	Each channel can be set to have a preceeding 'white noise' attention sound,
	BNG	or each channel can be set to have a preceeding 'bing bong' attention sound
Mute Period (in seconds)	After the message has been activated the mute period is the number of seconds to elapse after the message has finished before it can be triggered again if their are constant inputs.	
Links & 90 Second Mode	STD	Standard factory set for all channels =each channel input will activate the corresponding message.
	1 TO 2	Activation on input '1' only will trigger channel one message and will be followed by channel two message if constant triggering of input 1.(see links hold below)
	1 TO 3	As above but with three separate messages
	1 TO 4	As above but with four separate messages
	90S	Select this mode when only one 90 second message is required.Use input one and channel one only
Links Hold (in seconds)	Additional inputs have to be received within this time period to activate the next message	
Flashout	Hold down the program button and press the selected channel button seven times. The red indicator will flash out the sequence of all the settings.	
Program Chart Reset	Hold down the program button and press the selected channel button eight times to reset the channel to the factory settings.	

It is possible to trigger each individual channel by any normally open/ normally closed device or switch contact.

#### Examples:

GJD CCTV external detection systems  
 Remote Video Response Centre (RVRC)  
 IR beams  
 Alarm Panels  
 Panic Button/Radio links  
 GJD light controls (auxiliary output)



## **RECORDING MESSAGES**

### **TO RECORD AN INDIVIDUAL 20 SECOND MESSAGE**

- Press and hold the RECORD button first then press the selected channel button. The red indicator will light.
- Record the message for that channel then release the record button. The recording will stop when the button is released or the 20 second allowance is reached.

These steps can be repeated to record over a previously stored message. There is no limitation to re-recording messages.

### **TO RECORD ONE INDIVIDUAL 90 SECOND MESSAGE**

- Program selectable (Program chart - Option 5, Setting 5, Channel '1')
- This mode uses Channel '1' message and alarm input '1' only to activate.
- Press and hold the RECORD button first then press the number '1' channel button.
- Record the message then release the record button. The recording will stop when the button is released or the 90 second time allowance is reached.

### **TO PLAYBACK THE RECORDING OF EACH CHANNEL**

- Press and release the selected channel button

### **TO ERASE THE 90 SECOND RECORDING**

- Ensure any external 'line in' is disconnected
- Place the jumper link to 'line'
- Press and hold the RECORD button first then press the number '1' channel button. Hold the record button down for 90 seconds or until the red indicator goes out.

GJD reserves the right to amend specifications without notice

GJD LIMITED, BOLTON, BL1 2SD

Technical: 01706 363990 Sales: 01706 363998 Fax: 01706 363991 Email: info@gjd.co.uk